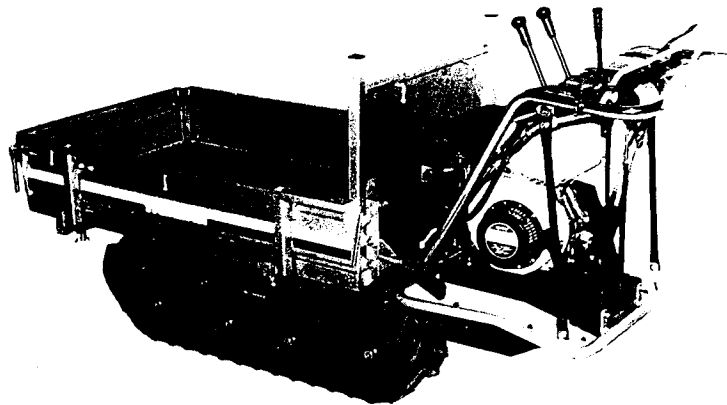


**YANMAR GASOLINE  
CARRIER  
MCG11F**

PARTS CATALOG

NPC-2680



**YANMAR AGRICULTURAL EQUIPMENT CO., LTD.**

# CONTENTS

YOUR PARTS ORDERING.....	1A02
SPECIFICATIONS.....	1A03
TABLE OF DETAILS OF SPECIFICATIONS .....	1A03

ENGINE UNIT(GA160E-SCKC) .....	1B02
GROUP NO. GROUP NAME	
1. CYLINDER BLOCK .....	1B03
2. CYLINDER HEAD & BONNET .....	1B04
3. TOOL & LABEL .....	1B05
4. AIR CLEANER & MUFFLER .....	1B06
5. CRANKSHAFT, PISTON & CAMSHAFT .....	1B07
6. FUEL OIL TANK & FUEL OIL LINE .....	1B08
7. CARBURETOR .....	1B09
8. GOVERNOR & CONTROL DEVICE .....	1B11
9. FLY. MAGNET & STARTING DEVICE .....	1B12
PULLEY & TENSION SECTION .....	1C02
1. TENSION ARM .....	1C03
2. PULLEY .....	1C04
FRAME SECTION .....	1C05
3. BODY FRAME .....	1C06
17. BODY FRAME(ADD. ITEM) .....	1C07
TRAVELING SECTION (1) .....	1C08
4. IDLER .....	1C09
5. TRACK ROLLER .....	1C10
CONTROL SECTION .....	1C11
6. HANDLE .....	1C12
7. TRAVEL LEVER .....	1C13
8. BRAKE LEVER .....	1C14
9. MAIN CHANGE LEVER .....	1C15
10. SIDE CLUTCH LEVER .....	1C16
14. DEADMAN LEVER(ADD. ITEM) .....	1D01

GROUP NO.	GROUP NAME	
18.	HANDLE(ADD. ITEM	1002
19.	TRAVEL LEVER(ADD. ITEM	1003
20.	BRAKE LEVER(ADD. ITEM	1004
21.	MAIN CHANGE LEVER(ADD. ITEM	1005
	PLATFORM CARRIER SECTION	1006
11.	PLATFORM CARRIER	1007
	TOOLS, ACCESSORIES & LABELS SEC	1008
12.	LABELS	1009
13.	TOOLS & ACCESSORIES	1010
15.	LABELS(ADD. ITEM	1011
16.	LABEL (SAFETY (ADDNL. ITEM)	1012
	TRAVELING SECTION (2)	1E02
1.	TRANSMISSION CASE	1E03
2.	MAIN SHAFT	1E04
3.	TRANSMISSION SHAFT B	1E05
4.	TRANSMISSION SHAFT C	1E06
5.	SIDE CLUTCH SHAFT	1E07
6.	AXLE	1E08
7.	BRAKE	1E09
8.	SIDE CLUTCH	1E10
9.	MAIN CHANGE	1E11
	PARTS INDEX	1M01
	FICHE INDEX	M16

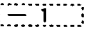
## YOUR PARTS ORDERING

- When placing your parts order with us, Please contact us upon confirming the Model, Part No, Description and Q'ty of the parts you want to order by this parts catalog.  
First look for the illustration of the part you want. Then you can find out the necessary informations by tracing the illustration No., as each illustration corresponds to the parts list on the following page.
- All parts the illustrations of which are not numbered shall not be sold separately.
- You are asked to prepare parts, especially consumable parts in the demand season earlier, as orders will come with a rush in this season.
- Parts other than those due to misshipping on your part shall not be allowed to returned in principle.
- Please surely use YANMAR Genuine Parts in any YANMAR Product.  
(Use of similar goods (parts) on the market causes earlier damage or worsening of performance.)

## HOW TO READ THIS PARTS CATALOG

- In the case where a Ref. No. given in the list does not agree with the corresponding Sketch No. in illustration (no suffix number as shown below), an illustration for such a New Part has been omitted only in the case of a parts change for which interchangeability Symbol N, R or K is given.

[Example]

Sketch No. in Illustration	Ref. No. in List	
1	1	(Before the change)
2	1 	(After the change)
	2	


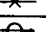
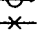
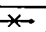
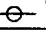
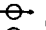
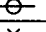
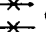
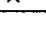
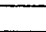
- Indication and meaning of level  
Level

- .....A number of dots indicated is called the level which refers to the assembly-component relation of an assembly part.  
(“.” refers to an assembly part.)
- .....Refers to a component included in an assembly part indicated by one dot (-).
- .....Refers to a component included in a complete part indicated by two dots (-•).  
(It indicates a sub-component of pertinent assembly part indicated by one dot (-).)

- Indication and meaning of interchangeability symbol

(Given under the column "I" next to the quantity column in the list)

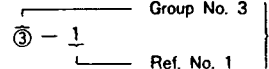
In the case where a parts change took place, one of the following interchangeability symbols is indicated for that part:

Symbol	Interchangeability	Contents note
N	New  Old 	New Part is interchangeable for Old Part but not interchangeable conversely.
P	New  Old 	Same as symbol N but supply of Old Part is suspended and New Part is sold in the future.
Q	New  Old 	New Part is not interchangeable for Old Part but interchangeable conversely.
R	New  Old 	New Part is interchangeable for Old Part and vice versa.
S	New  Old 	New Part is not interchangeable for Old Part and vice versa.
W		Part newly added.
Z		Part discontinued.
F		Not interchangeable by single part but interchangeable by set of the related parts.
K		Changed only in quantity used.

- Remarks ..... (column "R" given at the right end of the list)  
9-1) A numerical or alphabetic character (symbol) may be indicated under the column "R".  
9-2) A comment (remarks) for a part in question is given at the lower part of the list, following a symbol identical to the aforementioned symbol when a symbol is indicated under the column "R".

- Virtual No. in illustration

A Sketch No. in illustration containing an encircled numeral indicates other related Group No.

[Example]  indicated.

- Change Effective Machine No.

When a part is changed, a Change Effective Machine No. of such a model for which a New Part is applied is indicated as follows:

[Example] Model columns A ~ F

(Model indication is given in two kinds, namely, 4-model and 6-model indications, correspond to A ~ F in front of Change Effective Machine No..)

4-model Indication

(A) =
(B) =
(C) =
(D) =

6-model Indication

(A) =	(D) =
(B) =	(E) =
(C) =	(F) =

[Example] A=F610001 B=F612001

Model column A indicates that a parts change is put into effect from Machine No. 610001 and on. And moreover Model column B indicates that a parts change is put into effect from Machine No. 612001 and on.

[Classification]

E ..... Engine No.  
F ..... Machine Body No. } indicated.  
R ..... Rotary Unit No.

- Additional Group No. found in the Revised Edition

Kindly understand that a Group No. other than consecutive numbers has been entered in the case where the corresponding Group is added within the pertinent Section.

[Example]

Section

BODY SECTION

Group No. Group name

- ENGINE FIXTURE & BATTERY
- FRAME & HYDRAULIC PUMP
- BEVEL GEAR CASE
- TRANSM. CASE & RUNNING CLUTCH
- CONTROL LEVERS
- CRAWLER

- ENGINE FIXTURE & BATTERY (Group added for the YSR1300-N)
- CONTROL LEVERS (Group added for the YSR1300-N)

SNOW REMOVAL SECTION

- CHUTE
- SNOW REMOVAL FRAME & BLOWER

Additional Groups are indicated.

Owing to the improvement of YANMAR Product involved or its parts, the contents of this Parts Catalog may be altered without prior notice to you.

# SPECIFICATIONS

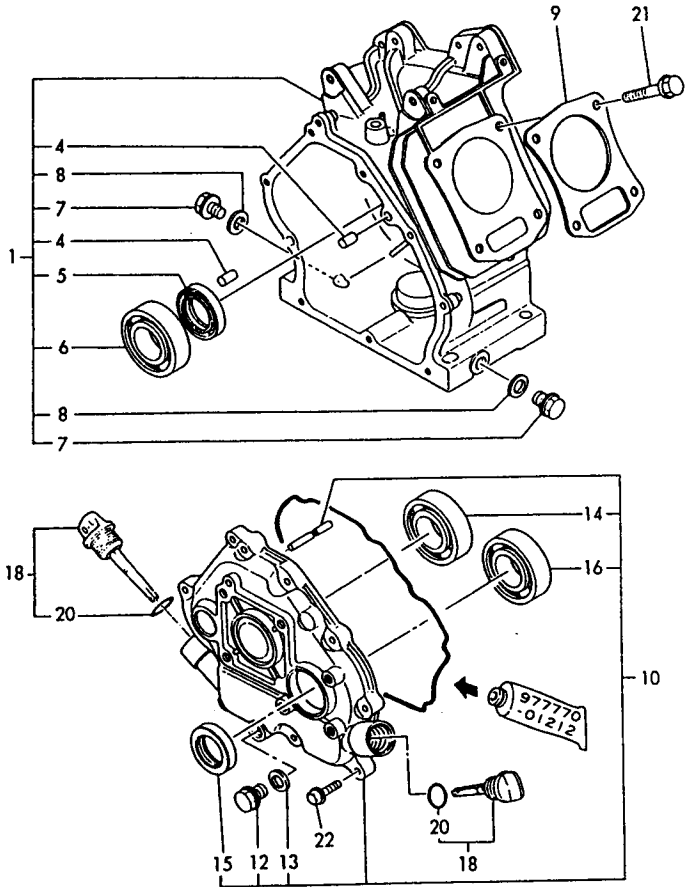
# 仕様内容について TABLE OF DETAILS OF SPECIFICATIONS

Model		MCG111F		
Specifications		MCG111F		
Item				
Body	Overall length (mm)	1910		
	Overall width (mm)	740		
	Overall height (mm)	980		
	Weight (kg)	236		
	Tread (mm)	460		
Platform	Overall length X Overall width (mm)	1120~1460X630~890		
Traveling unit	Min. radius of gyration (m)	Revolving on the spot		
	Max. carrying capacity (kg)	400		
	Speed (km/h)	Forward 1 st	1.7	
		Forward 2 nd	2.6	
		Forward 3 rd	3.4	
		Forward 4 th	5.2	
		Reverse 1 st	1.3	
Reverse 2 nd		2.1		
Transmission	Main clutch	Belt tension system(V belt B 1 belt)		
	Brake	Internal expanding type		
	Transmission system	All gear & side clutch type		
Loading engine		GA160SCKC		
Crawler	Width X Pitch X Rink (mm)	180X60X37(zigzag pattern)		
	Crawler bearing length (mm)	710		
Angle of dump		40°		

区		荷台形式 Platform type	スタート形式 Starter type
DIVISION 分	仕様 SPECIFICATIONS	手動ダンプ荷台 (箱形三方開閉式) Manual Dump Platform (Box & opening and closing type of three directions)	リコイルスタート Recoil starter
		A	MCG111F

NOTE: Given specifications may be altered for improvement, etc. without prior notice.

1. CYLINDER BLOCK



+-----+  
 | 1803 |  
 | (1802) |  
 +-----+  
 NPC-2633

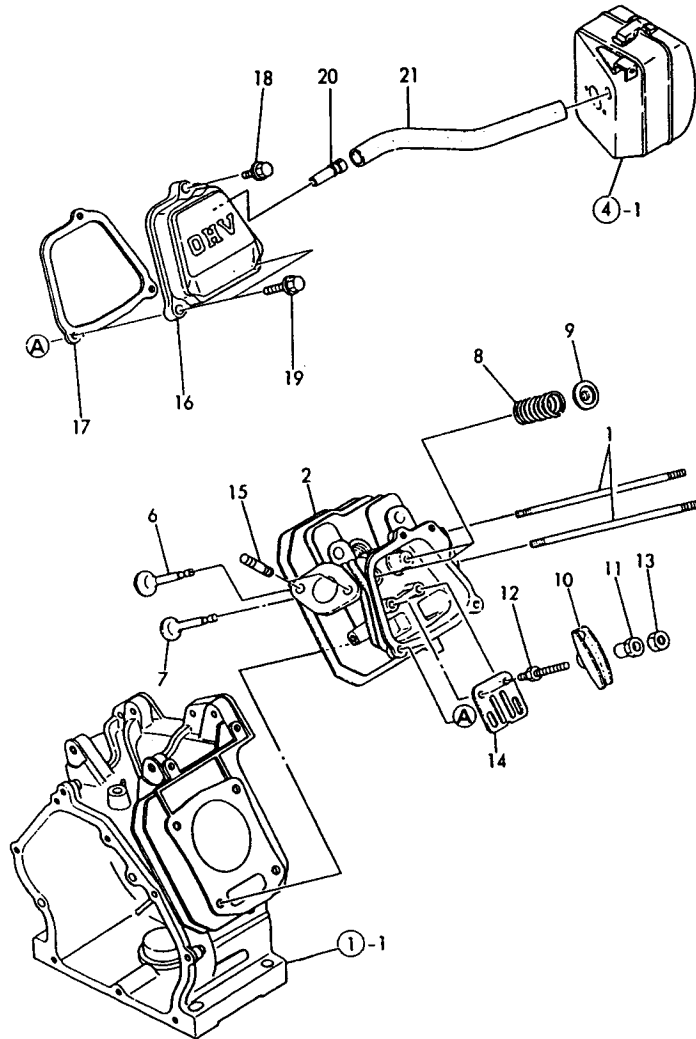
1. CYLINDER BLOCK

96.02.07

(A)=6A160E-SCKC (D)=  
 (B)= (E)=  
 (C)= (F)=

REF. NO.	LEV. 0	PART NO.	DESCRIPTION	-----Q'TY-----						I	P/U	A	R
				(A)	(B)	(C)	(D)	(E)	(F)				
1	.	760690-01560	BLOCK ASSY, CYLINDER	1								1	
I 1- 1	.	760690-01561 (A=EC9416 )	BLOCK ASSY, CYLINDER	1							N	1	
4	..	22312-080120	PARALLEL PIN 8X12	2								10	
5	..	160690-02220	OIL SEAL TC25416	1								1	
6	..	24101-062050	BALL BEARING	1								1	
7	..	160610-01690	PLUG, DRAIN	2								1	
8	..	104200-59170	GASKET 12	2								5	
9	.	160690-01330	GASKET, CYL. HEAD	1								1	
10	.	760690-01500	COVER ASSY, SIDE	1								1	
12	..	160610-01690	PLUG, DRAIN	1								1	
13	..	104200-59170	GASKET 12	1								5	
14	..	24101-062050	BALL BEARING	1								1	
15	..	160690-02220	OIL SEAL TC25416	1								1	
16	..	24101-062050	BALL BEARING	1								1	
18	.	160710-01760	CAP, W/LUB.OIL GAUGE	2								1	
20	..	24311-000180	O-RING 1A P-18.0	2								10	
21	.	160610-04201	BOLT M 8X 53	4								1	
22	.	26476-060252	BOLT M 6X 25,TAPPING	8								10	

2. CYLINDER HEAD & BONNET



-----+  
 | 1B04 |  
 | 1B02 |  
 +-----+  
 NPC-2633

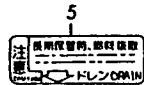
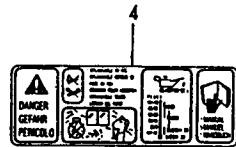
2. CYLINDER HEAD & BONNET

(A)=GA160E-SCKC (D)=  
 (B)= (E)=  
 (C)= (F)=

96.02.07

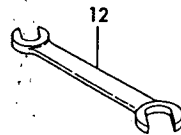
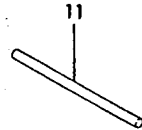
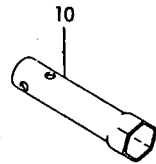
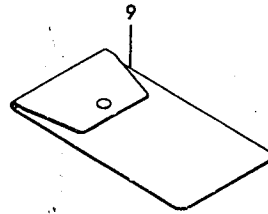
REF. NO.	LEV. 0	PART NO.	DESCRIPTION	-----Q'TY-----						I	P/U	A	R
				(A)	(B)	(C)	(D)	(E)	(F)				
1	.	160610-04570	BOLT M 6X 70	2								1	
2	.	160690-11010	HEAD ASSY, CYLINDER	1								1	
6	.	160690-11100	VALVE, INTAKE	1								1	
7	.	160690-11110	VALVE, EXHAUST	1								1	
8	.	160690-11120	SPRING, VALVE	2								1	
9	.	160690-11180	RETAINER, SPRING	2								1	
10	.	160690-11200	ARM, ROCKER	2								1	
11	.	160690-11220	PIVOT, ROCKER ARM	2								1	
12	.	160690-11270	BOLT	2								1	
I 12- 1	.	160690-11271 (A=E97205)	BOLT	2							N	1	
13	.	160690-11280	NUT M6X 0.5	2								1	
14	.	160690-11290	PLATE, GUIDE	1								1	
15	.	26216-080182	STUD M 8X 18 PLATED	2								10	
16	.	160690-11300	BONNET	1								1	
17	.	160690-11310	GASKET, BONNET	1								1	
18	.	26106-060202	BOLT M 6X 20 PLATED	1								10	
19	.	26106-060352	BOLT M 6X 35 PLATED	2								10	
20	.	160690-03050	BREATHER	1								1	
21	.	160810-03180	PIPE, BREATHER	1								1	

3. TOOL & LABEL



6  
 PULITE IL FILTRO DELL'ARIA OGNI 20-30 ORE DI LAVORO (OGNI 10 ORE IN AMBIENTE DI LAVORO POLVEROSO)  
 DOPO AVERE LAVATO CON KEROSENE L'ELEMENTO FILTRANTE IN SPUGNA, STRIZZATELO E LASCIATELO ASCIUGARE COMPLETAMENTE.  
 UNA VOLTA ASCIUTTO, IMBEVTELO CON OLIO MOTORE E STRIZZATELO BENE PRIMA DI REINSTALLARLO.

7  
 NETTOYER FILTRE A AIR PAR DE 20 A 30 HEURES. (NETTOYER PER 10 HEURES A ENDROIT POUSSIEREUX)  
 NETTOYER EPONGE AVEC HUILE D'ECLAIRAGE OU ESSENCE ET SECHEZ BIEN APRES PRESSER. ENSUITE PLONGEZ DANS ESSENCE POUR ENLEVER HUILE EXCEDENT EN BIEN PRESSANT.



8  
 Clean out air filter every 20-30 hours, (every 10 hours in dusty areas)  
 After washing the sponge with kerosene, thoroughly wring out and let dry.  
 After drying, soak in new engine oil, wring well and use.

-----+  
 (1) REF.NO.5 YANMAR LIGHT YELLOW,  
 1 5-1 YANMAR NEW RED.

96.02.07

3. TOOL & LABEL

-----+  
 (1805)  
 (1802)  
 -----+  
 NPC-2633

(A)=GA160E-SCKC (D)=  
 (B)= (E)=  
 (C)= (F)=

REF. NO.	LEV. 0	PART NO.	DESCRIPTION	-----Q'TY-----						I	P/U	A	R
				(A)	(B)	(C)	(D)	(E)	(F)				
1	.	160798-07100	LABEL, FINGER START	1								1	
4	.	160708-07260	MARK, CAUTION	1								1	
5	.	160520-07271	LABEL, DRAIN	1								1	
1	5-1	160520-07272 (A=EB4379)	LABEL, DRAIN	1							S	1	(1)
6	.	160664-07360	LABEL, AIR CLEAWER	1								1	
7	.	160662-07370	LABEL, AIR CLEANER	1								1	
8	.	160664-07370	LABEL, AIR CLEANER	1								1	
9	.	160110-92610	BAG, TOOL	1								1	
10	.	160120-92700	SPANNER, BOX	1								1	
11	.	160110-92710	BAR	1								1	
12	.	28110-100120	WRENCH 10X12	1								1	

-----+  
 REMARKS  
 (1) エアフィルタ NO.5 ヤンマーライトイエロー、  
 5-1 ヤンマーニュー レッド。

(1) REF.NO.5 YANMAR LIGHT YELLOW,  
 1 5-1 YANMAR NEW RED.



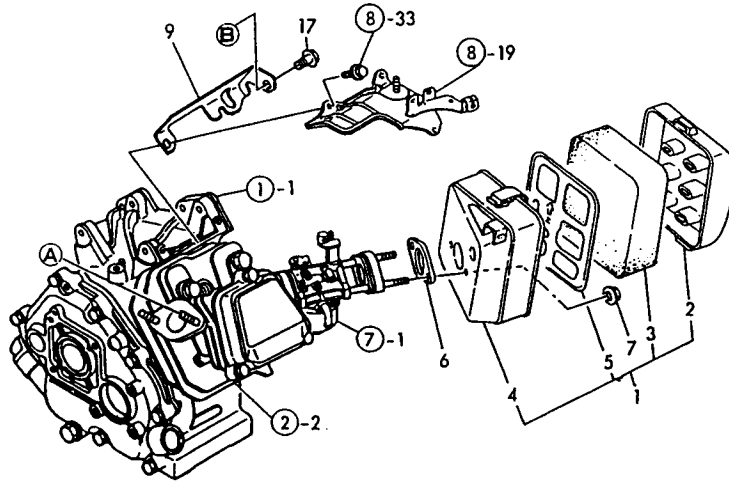
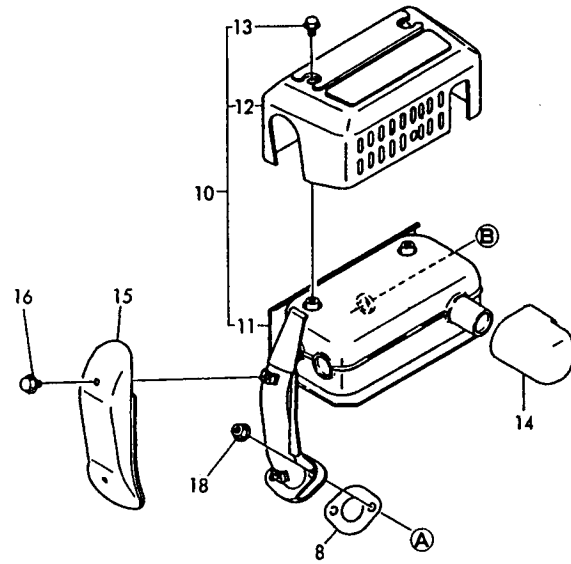
4. AIR CLEANER & MUFFLER

-----+  
 | 1806 |  
 | (1802) |  
 -----+  
 NPC-2633

4. AIR CLEANER & MUFFLER

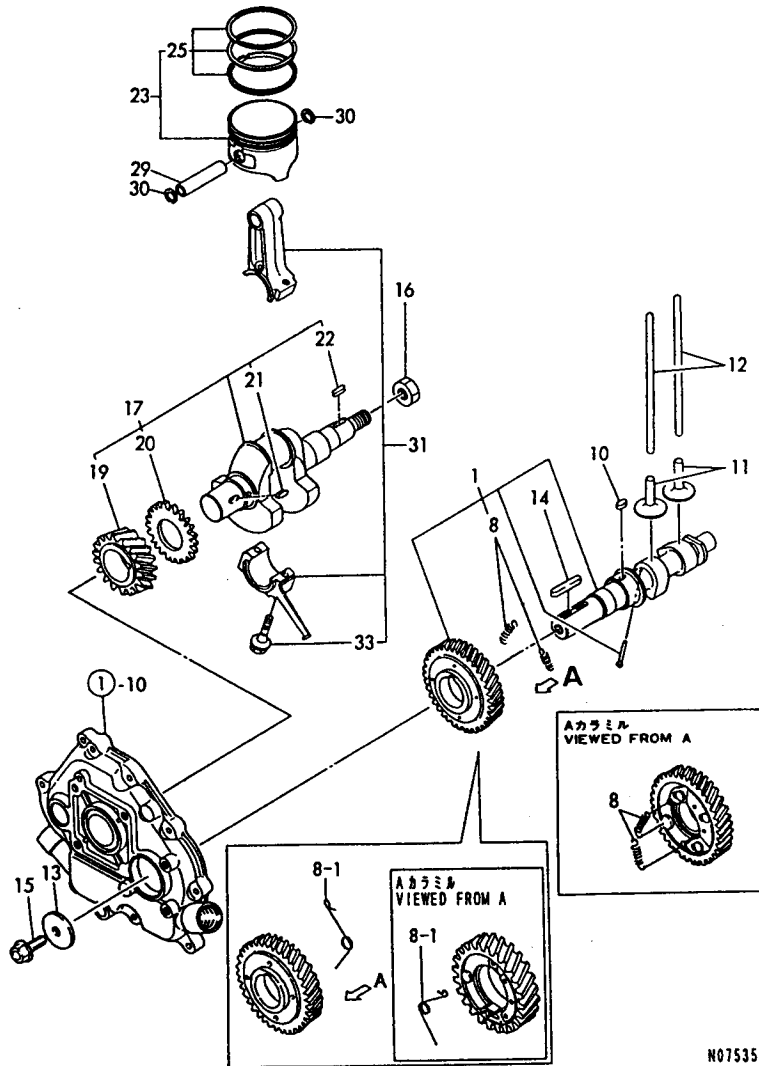
96.02.07

(A)=6A160E-SCKC (D)=  
 (B)= (E)=  
 (C)= (F)=



REF. NO.	LEV. 0	PART NO.	DESCRIPTION	-----Q'TY-----						I	P/U	A	R
				(A)	(B)	(C)	(D)	(E)	(F)				
1	.	160690-12610	CLEANER ASSY, AIR	1								1	
2	..	160690-12510	CAP, AIR CLEANER	1								1	
3	..	160760-12530	ELEMENT	1								1	
4	..	160690-12540	BODY, AIR CLEANER	1								1	
5	..	160493-12550	HOLDER, ELEMENT	1								1	
6	.	160610-56150	GASKET, CARBURETOR	1								1	
7	.	26366-060002	NUT M 6									2	10
8	.	160690-13200	GASKET, MUFFLER	1								1	1
9	.	160690-13550	BRACKET, MUFFLER	1								1	1
10	.	160693-13600	MUFFLER W/COVER	1								1	1
11	..	160693-13510	MUFFLER	1								1	1
12	..	160693-13540	COVER, MUFFLER	1								1	1
13	..	26106-060082	BOLT M 6X 8 PLATED	3								10	1
14	.	160321-13770	EXTENSION, MUFFLER	1								1	1
15	.	160690-13900	COVER, ELBOW	1								1	1
16	.	114252-13950	BOLT M 6X 8 PLATED	2								1	1
17	.	26106-080142	BOLT M 8X 14 PLATED	1								10	1
18	.	26366-080002	NUT M 8	2								10	1

5. CRANKSHAFT, PISTON & CAMSHAFT



N075355

96.02.07

5. CRANKSHAFT, PISTON & CAMSHAFT

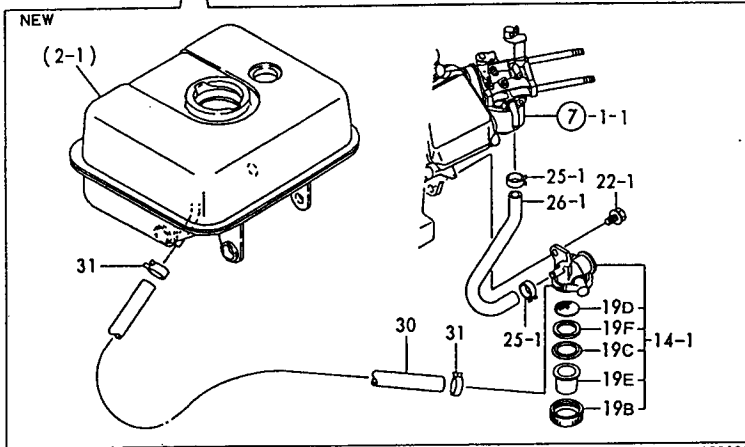
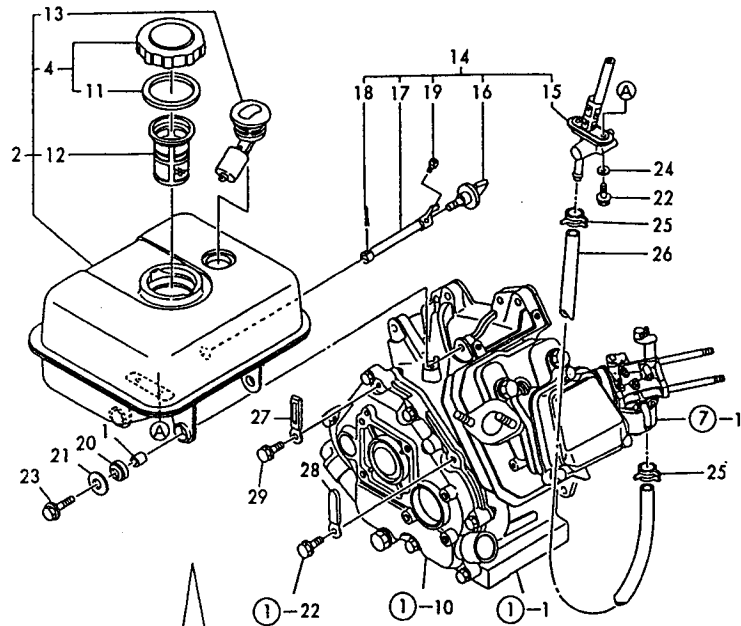
↑-----↑  
 | 1807 |  
 | (1802) |  
 ↑-----↑  
 NPC-2633

(A)=GA160E-SCKC (D)=  
 (B)= (E)=  
 (C)= (F)=

REF. NO.	LEV. 0	PART NO.	DESCRIPTION	-----Q'TY-----						I	P	U	A	R
				(A)	(B)	(C)	(D)	(E)	(F)					
1	.	160690-14051	CAMSHAFT ASSY	1										1
8	..	160690-14560	SPRING, DECOMP.											1
I 8-1	..	160690-14570	SPRING, DECOMP.	1								\$		1
(A=E86239)														
I 10	.	22512-040120	KEY 4X 12	1										1
11	.	160490-14200	TAPPET	2										1
12	.	114250-14400	ROD, PUSH	2										1
13	.	160310-14550	WASHER	1										1
14	.	22512-050300	KEY 5X 30	1										1
15	.	26106-080202	BOLT M 8X 20 PLATED	1										10
16	.	160610-04910	NUT M14	1										1
17	.	760690-21701	CRANKSHAFT ASSY	1										1
19	..	160690-21201	GEAR, CRANKSHAFT	1										1
20	..	160590-21210	GEAR, IDLE	1										1
21	..	22512-040120	KEY 4X 12	1										1
22	..	22512-040160	KEY 4X 16	1										1
23	.	160690-22011	PISTON W/RINGS	1										1
25	..	760690-22501	RING SET (T.R.=1.5)	1										1
29	.	160690-22300	PIN, PISTON	1										1
30	.	22252-000160	CIRCLIP 16	2										10
31	.	760690-23700	ROD ASSY, CONNECTING	1										1
33	..	160710-23201	BOLT, ROD	2										2

N075355

6. FUEL OIL TANK & FUEL OIL LINE



N075356

+-----+  
I 1808 I  
I (1802) I  
+-----+  
NPC-2633

6. FUEL OIL TANK & FUEL OIL LINE

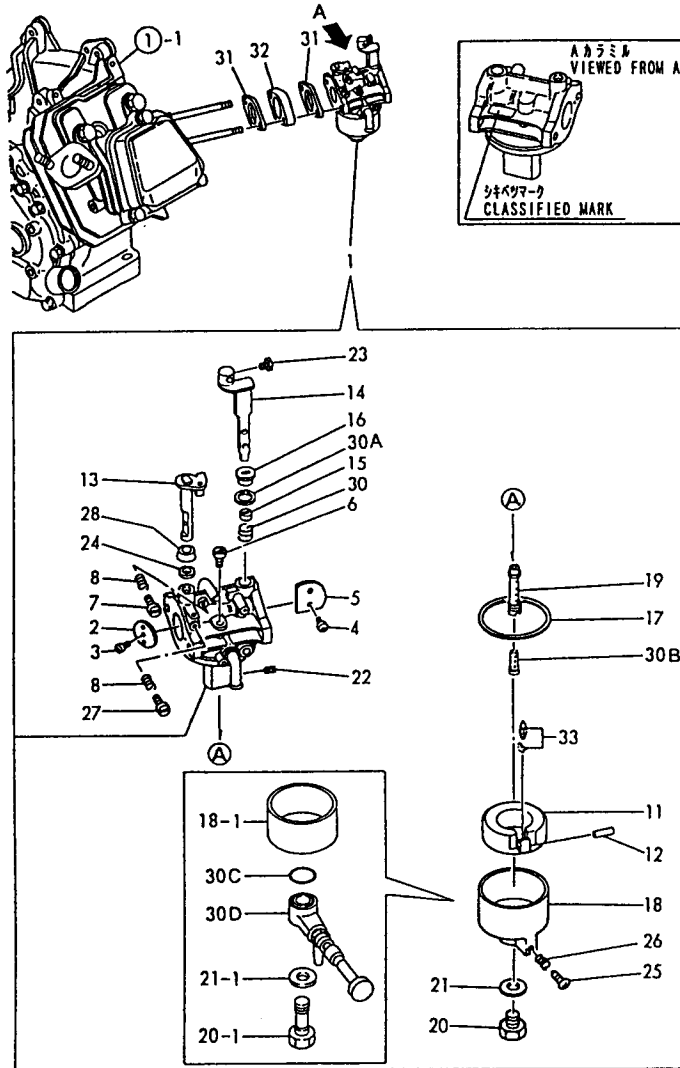
(A)=6A160E-SCKC (D)=  
(B)= (E)=  
(C)= (F)=

96.02.07

REF. NO.	LEV. 0	PART NO.	DESCRIPTION	-----Q'TY-----						I	P/U	A	R
				(A)	(B)	(C)	(D)	(E)	(F)				
1	.	114250-45310	COLLAR	4								1	
2	.	760690-55700	TANK, FUEL (RED) (50)	1								1	
I 2-1	.	760690-55710	TANK ASSY, FUEL	1							S	1	
4	..	160710-55061	CAP ASSY, FUEL TANK	1								1	
11	...	160393-55050	GASKET, TANK CAP	1								1	
12	..	160610-55100	STRAINER	1								1	
I 13	..	160762-55150	GAUGE, FUEL	1								1	
14	.	160690-55300	COCK ASSY, FUEL	1								1	
I 14-1	.	160692-55300	COCK ASSY, FUEL	1							S	1	
I 15	..	160690-55310	COCK ASSY, FUEL	1							Z	1	
I 16	..	160690-55320	LEVER, FUEL COCK	1							Z	1	
I 17	..	160690-55330	SHIFT, FUEL COCK	1							Z	1	
I 18	..	22417-200200	COTTER PIN 2.OX20	1							Z	10	
I 19	..	26557-040102	SCREW M 4X 10	1							Z	10	
I 19B	..	160710-55360	RING	1							W	1	
I 19C	..	160710-55370	GASKET	1							W	1	
I 19D	..	160710-55381	STRAINER, FUEL	1							W	1	
I 19E	..	160710-55390	BOWL, STRAINER	1							W	1	
I 19F	..	160692-55421	PLATE	1							W	1	
20	.	160690-55460	DAMPER, FUEL TANK	4								1	
21	.	160610-55470	PIECE	4								1	
I 22-1	.	26106-060142	BOLT M 6X 14 PLATED	2							S	10	
I 22-1	.	26106-060102	BOLT M 6X 10 PLATED	1							S	10	
I 23	.	26476-060252	BOLT M 6X 25, TAPPING	4							Z	10	
I 24	.	43400-500400	SEAL WASHER 6	2							Z	1	
I 25-1	.	106990-44660	BAND, HOSE	2							N	5	
I 25-1	.	124060-77680	CLAMP 10	2							N	5	
I 26-1	.	160690-59360	PIPE, FUEL	1							S	1	
I 26-1	.	160820-59390	PIPE, FUEL	1							S	1	
I 27	.	160260-78700	CLAMP, CORD	1							Z	1	
I 28	.	160710-78710	CLAMP, CORD	1								1	
I 29	.	26476-060142	BOLT M 6X 14, TAPPING	1							Z	10	
I 30	.	160802-59370	PIPE, FUEL	1							W	1	
I 31	.	106990-44660	BAND, HOSE	2							W	1	

N075356

7. CARBURETOR



N075357

-----  
 (1) ONLY FOR REPAIR.  
 (2) CLASSIFIED MARK: REF. NO. 1 160SCK,  
 1-1 & 160CKA.  
 (3) DIFFERENCE BETWEEN NO. 14 & 14-1,  
 30 & 30-1 REFER TO NO. 1 & 1-1.  
 -----

7. CARBURETOR

96.02.07

+-----+  
 | 1809 |  
 | (1802) |  
 +-----+  
 NPC-2633

(A)=GA160E-SCKC (D)=  
 (B)= (E)=  
 (C)= (F)=

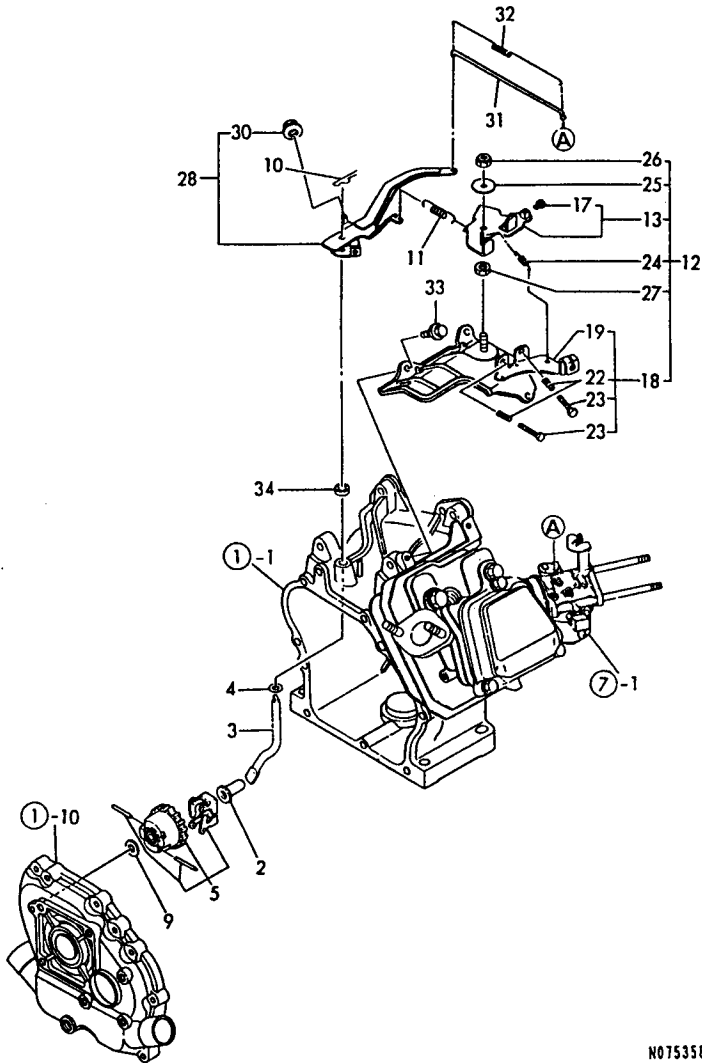
REF. NO.	LEV. 0	PART NO.	DESCRIPTION	Q'TY						I	P	U	A	R
				(A)	(B)	(C)	(D)	(E)	(F)					
1	.	160691-56010	CARBURETOR ASSY	1										
I 1-1	.	160691-56040 (A=EC9416)	CARBURETOR	1							N	1		(2)
2	..	160592-56540	VALVE, THROTTLE	1										1
3	..	160810-56670	SCREW	1										1
4	..	160903-56670	SCREW	2										1
5	..	160590-56530	VALVE, CHOKE	1										1
6	..	160610-56740	JET, PILOT	1										1
7	..	160692-56710	SCREW	1										1
8	..	181230-56380	SPRING	2										1
11	..	160769-56620	FLOAT ASSY	1										1
12	..	160610-56630	PIN, FLOAT	1										1
13	..	160692-56640	SHAFT, THROTTLE	1										1
14	..	160691-56750	LEVER, CHOKE	1										1
I 14-1	..	160594-56650 (A=EC9416)	LEVER, CHOKE	1							S	1		(3)
15	..	160810-56580	RING, CHOKE SHAFT	1										1
16	..	160594-56590	RING, CHOKE LEVER	1										1
17	..	160610-56610	GASKET	1										1
18	..	160769-56640	BODY, FLOAT CHAMBER	1										1
I 18-1	..	160592-56670 (A=EC9416)	BODY, FLOAT CHAMBER	1							S	1		1
19	..	160590-56670	NOZZLE, MAIN	1										1
20	..	160769-56660	BOLT	1										1
I 20-1	..	160692-56730 (A=EC9416)	BOLT	1							S	1		1
21	..	160610-56611	GASKET	1										1
I 21-1	..	160802-56480 (A=EC9416)	GASKET	1							S	1		1
21-2	..	160802-56480	GASKET	1										1
22	..	160690-56800	JET, ENRICHMENT	1										1
23	..	26117-040088	BOLT M 4X 8 PLATED	1										10
24	..	160640-56850	SEAL	1										1
I 25	..	160610-56900 (A=EC9416)	SCREW	1							Z	1		1
I 26	..	181230-56380 (A=EC9416)	SPRING	1							Z	1		1
27	..	160667-56750	SCREW, ADJUSTING	1										1
28	..	160702-56720	RING	1										1
30	..	160691-56760	SPRING	1										1
I 30-1	..	160594-56810 (A=EC9416)	SPRING	1							S	1		(3)
I 30A	..	160692-56800 (A=FROM 1ST)	SEAL, RUBBER	1									W	1
I 30B	..	160690-56750 (A=FROM 1ST)	NOZZLE	1									W	1
I 30C	..	160692-56620 (A=EC9416)	O-RING	1									W	1
I 30D	..	160792-56591 (A=EC9416)	BODY A, COCK	1									W	1
31	.	160610-56150	GASKET, CARBURETOR	2										1
32	.	160690-56160	SPACER	1										1
33	.	160692-56560	VALVE, NEEDLE (RUBBER)	1										1 (1)

\*\* CONTINUE \*\*

N075357



8. GOVERNOR & CONTROL DEVICE



N075358

8. GOVERNOR & CONTROL DEVICE

96.02.07

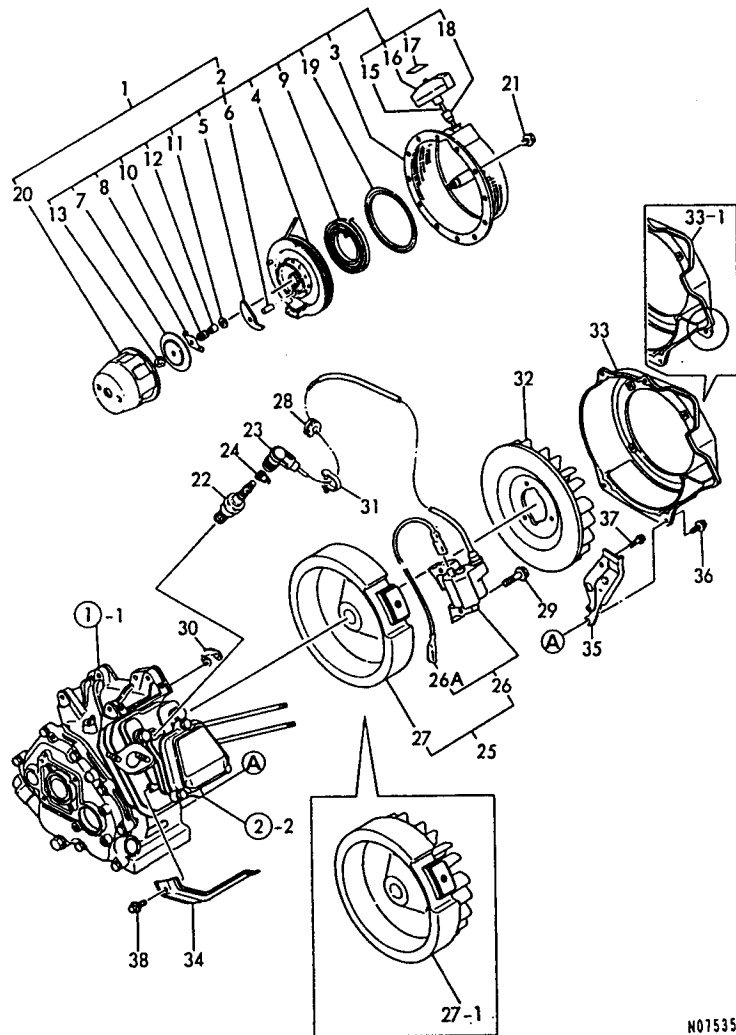
+-----+  
 I 1811 I  
 I (1802) I  
 +-----+  
 NPC-2633

(A)=GA160E-SCKC (D)=  
 (B)= (E)=  
 (C)= (F)=

REF. NO.	LEV. 0	PART NO.	DESCRIPTION	-----Q'TY-----						I	P	U	A	R
				(A)	(B)	(C)	(D)	(E)	(F)					
2	.	160690-61300	SPINDLE, GOVERNOR	1										1
3	.	160690-61310	SHAFT, GOV. LEVER	1										1
4	.	160690-61450	WASHER	1										1
5	.	160690-61600	GEAR ASSY, GOV.	1										1
9	.	160120-76940	WASHER	1										1
10	.	22372-080000	SNAP PIN (JASO 8)	1										10
11	.	160690-66010	SPRING, GOVERNOR	1										1
I 11- 1	.	160690-66011 (A=EC0697 )	SPRING, GOVERNOR	1									N	1
12	.	160692-66101	CONTROL ASSY	1										1
13	..	160692-66051	LEVER ASSY, CONTROL	1										1
17	...	26117-040088	BOLT M 4X 8 PLATED	1										10
18	..	160690-66111	BASE ASSY, CONTROL	1										1
19	...	160690-66140	BASE, CONTROL	1										1
I 19- 1	...	160690-66141 (A=E79547 )	BASE, CONTROL	1									N	1
I 19- 2	...	160690-66142 (A=EA6848 )	BASE, CONTROL	1									N	1
I 19- 3	...	160690-66143 (A=EC9416 )	BASE, CONTROL	1									N	1
22	...	160520-66291	SPRING	2										1
23	...	26117-040257	BOLT M 4X 25	2										10
24	..	160664-66220	SPRING, RETURN	1										1
25	..	160670-66350	COLLAR	1										1
26	..	26347-060002	U-NUT M 6	1										10
27	..	26757-060002	NUT M 6	1										10
28	.	160690-66180	LEVER ASSY, GOVERNOR	1										1
30	..	26366-060002	NUT M 6	1										10
31	.	160690-66200	LINK, THROTTLE	1										1
32	.	160690-66210	SPRING, TENSION	1										1
33	.	26476-060142	BOLT M 6X 14, TAPPING	3										10
I 34	.	114770-61600 (A=E93096 )	SEAL, OIL	1									W	1

N075358

9. FLY.MAGNET & STARTING DEVICE



N075359

9. FLY.MAGNET & STARTING DEVICE

96.02.07

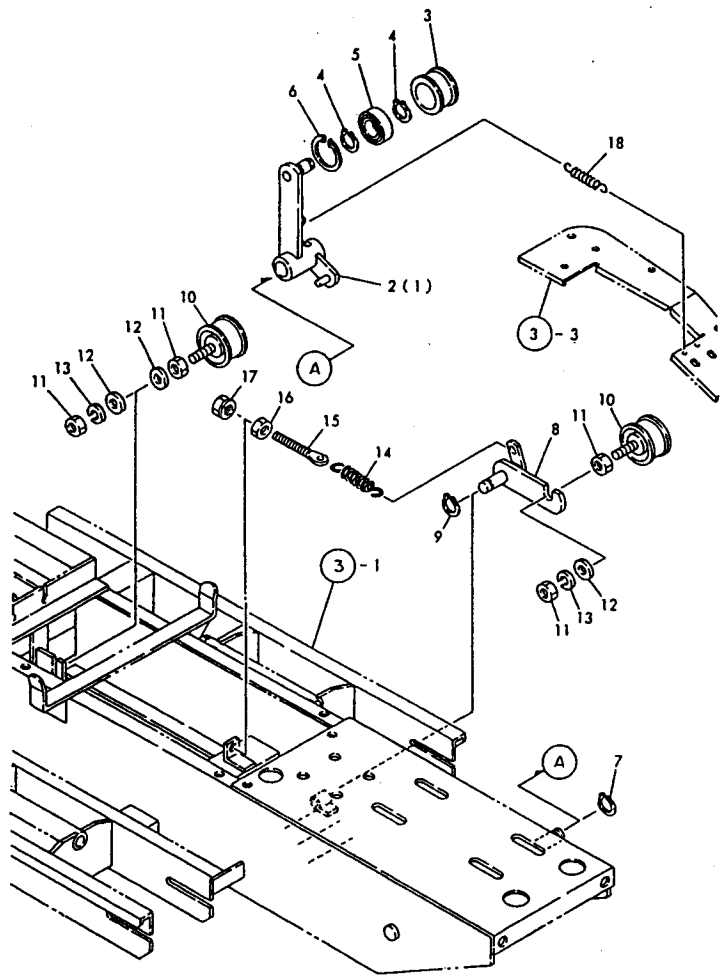
↑-----↑  
↑ 1812 ↑  
↑ (1802) ↑  
↑-----↑  
NPC-2633

(A)=GA160E-SCKC (D)=  
(B)= (E)=  
(C)= (F)=

REF. NO.	LEV. 0	PART NO.	DESCRIPTION	Q'TY-----						I	P	U	A	R
				(A)	(B)	(C)	(D)	(E)	(F)					
1	.	160691-76050	STARTER ASSY, RECOIL	1										1
2	..	160691-76250	RECOIL ASSY	1										1
3	...	160690-76510	CASE, STARTER	1										1
4	...	160690-76520	REEL	1										1
5	...	160690-76800	RATCHET	1										1
6	...	160690-76810	PIN, RATCHET	1										1
7	...	160690-76580	PLATE, FRICTION	1										1
8	...	160690-76530	GUIDE, RATCHET	1										1
9	...	160690-76540	SPRING, SPIRAL	1										1
10	...	160690-76560	SPRING, FRICTION	1										1
11	...	160690-76550	WASHER, THRUST	1										1
12	...	160690-76820	SHAFT	1										1
13	...	26367-060002	NUT M 6	1									30	
15	....	160691-76630	ROPE, STARTER	1										1
16	....	160690-76620	KNOB, STARTER	1										1
17	....	160690-76830	CAP, KNOB	1										1
18	....	160710-76640	DAMPER	1										1
19	....	160690-76840	PLATE, SLIDE	1										1
20	..	160690-76590	PULLEY, STARTER	1										1
21	.	26106-060082	BOLT M 6X 8 PLATED	4										10
22	.	160690-78010	PLUG, SPARK	1										1
I 22-	1	160690-78020	PLUG, SPARK	1									N	1
		(A=EB2378)												
23	.	160700-78040	CAP, PLUG	1										1
24	.	160700-78050	TERMINAL, PLUG	1										1
I 25	.	160690-78081	MAGNET ASSY, FLYWHEEL	1										1
I 25-	1	160690-78082	MAGNET ASSY, FLYWHEEL	1									R	1
		(A=E75483)												
I 26	..	160690-78532	IGNITER	1										1
I 26A	...	160690-78230	CORD, STOP	1									W	1
		(A=FROM 1ST)												
I 27	..	160690-78540	ROTOR	1										1
I 27-	1	160690-78541	ROTOR	1									S	1
		(A=E75483)												
28	.	160700-78720	GROMMET	1										1
29	.	26476-060302	BOLT M 6X 30, TAPPING	2										10
30	.	29610-000650	CLAMP, SPEED O65	1										1
31	.	29610-000950	CLAMP, SPEED O95	1										1
I 32	.	160690-45011	FAN, COOLING	1									Z	1
		(A=E75483)												
33	.	160693-45110	CASE, FAN (WHITE)(14)	1										1
I 33-	1	160692-45110-2	CASE, FAN (WHITE:14)	1									S	1
		(A=EC9416)												
34	.	160690-45200	COVER, CYLINDER	1										1
I 35	.	160690-45211	COVER, REAR	1									Z	1
		(A=EC9416)												
36	.	26476-060142	BOLT M 6X 14, TAPPING	4										10
I 37	.	26476-060142	BOLT M 6X 14, TAPPING	1									Z	10
		(A=EC9416)												
38	.	26476-060142	BOLT M 6X 14, TAPPING	1										10

N075359

1. TENSION ARM



NO76596

↑-----↑  
 | 1C03 |  
 | (1C02) |  
 ↓-----↓  
 NPC-2680

1. TENSION ARM

96.02.07

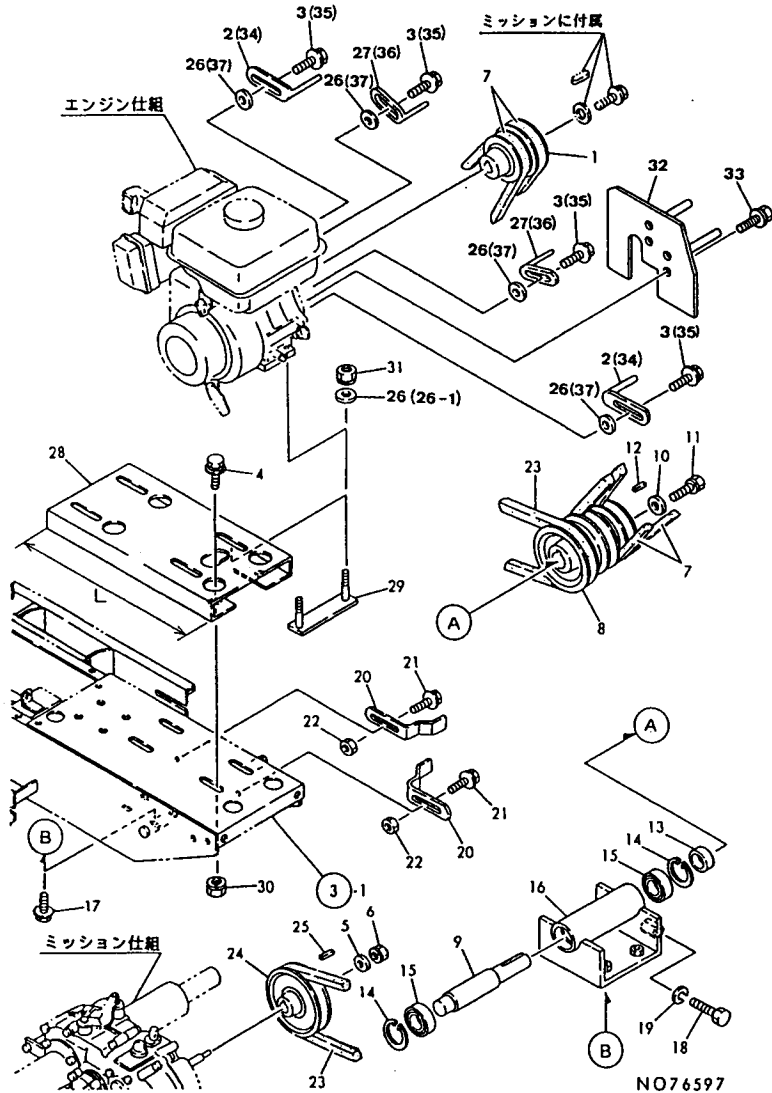
(A)=MCG111F (D)=  
 (B)= (E)=  
 (C)= (F)=

REF. NO.	LEV. 0	PART NO.	DESCRIPTION	-----Q'TY-----						I P/U A R
				(A)	(B)	(C)	(D)	(E)	(F)	
1	-	1N1366-22010	ARM A, TENSION	1						1
2	-	1N1366-22020	ARM B, TENSION	1						1
3	-	1N1430-22070	ROLLER, TENSION	2						1
4	-	22242-000150	CIRCLIP 15	4						10
5	-	24104-062024	BALL BEARING	2						1
6	-	22252-000350	CIRCLIP 35	2						10
7	-	22242-000200	CIRCLIP 20	1						10
8	-	1N1366-22050	ARM D, TENSION	1						1
9	-	22242-000160	CIRCLIP 16	1						10
10	-	1N1185-22060	ROLLER S, TENSION	2						1
11	-	26757-120002	LOCK NUT M12 PLATED	4						10
12	-	22137-120000	WASHER 12, POLISHED	3						10
13	-	22217-120000	WASHER 12, SPRING	2						10
14	-	1N1210-53030	SPRING 21.5X78, TENS.	1						1
15	-	1N1110-42001	ROD A, CLUTCH BRAKE	1						1
16	-	26757-080002	LOCK NUT M 8 PLATED	1						10
17	-	26051-080002	NUT M 8	1						20
18	-	1N1190-45000	SPRING 11X72.5, TENS.	2						1

NO76596



2. PULLEY



(1) PARTS OF OVERSEAS SPECIFICATION  
 (2) PARTS OF DOMESTIC SPECIFICATION  
 (3) REF.NO.28 L=280 NO.28-1 L=275

96.02.07

2. PULLEY

+-----+  
 | 1C04 |  
 | (1C02) |  
 +-----+  
 NPC-2680

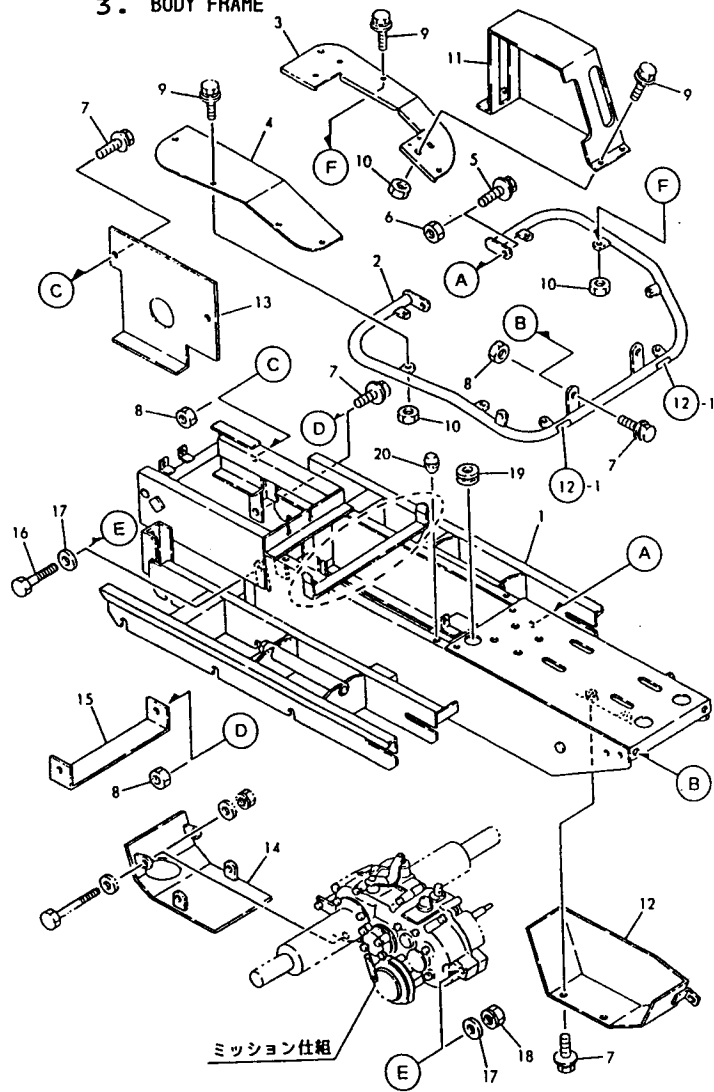
(A)=MCG111F (D)=  
 (B)= (E)=  
 (C)= (F)=

REF. NO.	LEV. 0	PART NO.	DESCRIPTION	Q'TY						I	P	U	A	R
				(A)	(B)	(C)	(D)	(E)	(F)					
1	-	1N1366-21080	V-PULLEY,ENGINE	1										1
I 2	-	1N1270-22080 (A=F011734)	GUIDE 80,BELT	2										Z 1
I 3	-	26018-080164 (A=F011734)	BOLT M 8X 16	4										Z 20
4	-	26117-100254	BOLT M10X25 PLATED	4										5
5	-	22137-100000	WASHER 10,POLISHED	1										10
6	-	26051-100002	NUT M10	5										10
7	-	25123-002801	V-BELT	2										1
8	-	1N1366-21010	V-PULLEY	1										1
9	-	1N1366-21060	SHAFT	1										1
10	-	1N1090-21010	WASHER 9X35X3.2	1										1
11	-	26016-080204	BOLT M 8X 20	1										20
12	-	22550-070400	KEY 7X40	1										5
13	-	1N1210-21010	COLLAR,COUNTER SHAFT	1										1
14	-	22252-000520	CIRCLIP 52	2										10
15	-	24104-062054	BALL BEARING	2										1
16	-	1N1366-21030	METAL,COUNTER SHAFT	1										1
17	-	26018-100254	BOLT M10X 25	4										10
18	-	26117-100554	BOLT M10X 55 PLATED	1										2
19	-	22217-100000	SPRING WASHER 10	1										10
20	-	1N1366-22000	GUARD,BELT	2										1
21	-	26018-080254	BOLT M 8X 25	2										10
22	-	26367-080002	U-NUT M 8	2										10
23	-	25123-008401	V-BELT SP.B84H	1										1
24	-	1N1366-21020	V-PULLEY,TRANSMIS'N	1										1
25	-	22550-050250	KEY 5X25	1										5
26	-	22137-080000	WASHER 8, POLISHED	8										10
I 26- 1	-	22137-080000 (A=F011734)	WASHER 8, POLISHED	4										K 10
I 27	-	1N1291-22020 (A=F011734)	GUARD 40,BELT	2										Z 1
28	-	1N1367-16000	BASE,ENGINE	1										1
I 28- 1	-	1N1367-16001 (A=F011734)	BASE,ENGINE	1										S (3)
29	-	1N1367-16010	BOLT,ENGINE MOUNTING	2										1
30	-	26367-100002	U-NUT M10	4										10
31	-	26051-080002	NUT M 8	4										20
I 32	-	1N1367-22000 (A=F011734)		1										W (2)
I 33	-	26018-080164 (A=F011734)	BOLT M 8X 16	4										W 20 (2)
I 34	-	1N1270-22080 (A=F011734)	GUIDE 80,BELT	2										W 1 (1)
I 35	-	26018-080164 (A=F011734)	BOLT M 8X 16	4										-W 20 (1)
I 36	-	1N1291-22020 (A=F011734)	GUARD 40,BELT	2										W 1 (1)
I 37	-	22137-080000 (A=F011734)	WASHER 8, POLISHED	4										W 10 (1)

(1) 海外仕様部品 (1) PARTS OF OVERSEAS SPECIFICATION  
 (2) 国内仕様部品 (2) PARTS OF DOMESTIC SPECIFICATION  
 (3) 参考番号.28 L=280,NO.28-1 L=275 (3) REF.NO.28 L=280 NO.28-1 L=275

NO76597

3. BODY FRAME



3. BODY FRAME

(A)=MCG111F (D)=  
 (B)= (E)=  
 (C)= (F)=

↑-----↑  
 I 1C06 I  
 I (1C05) I  
 ↑-----↑  
 NPC-2680

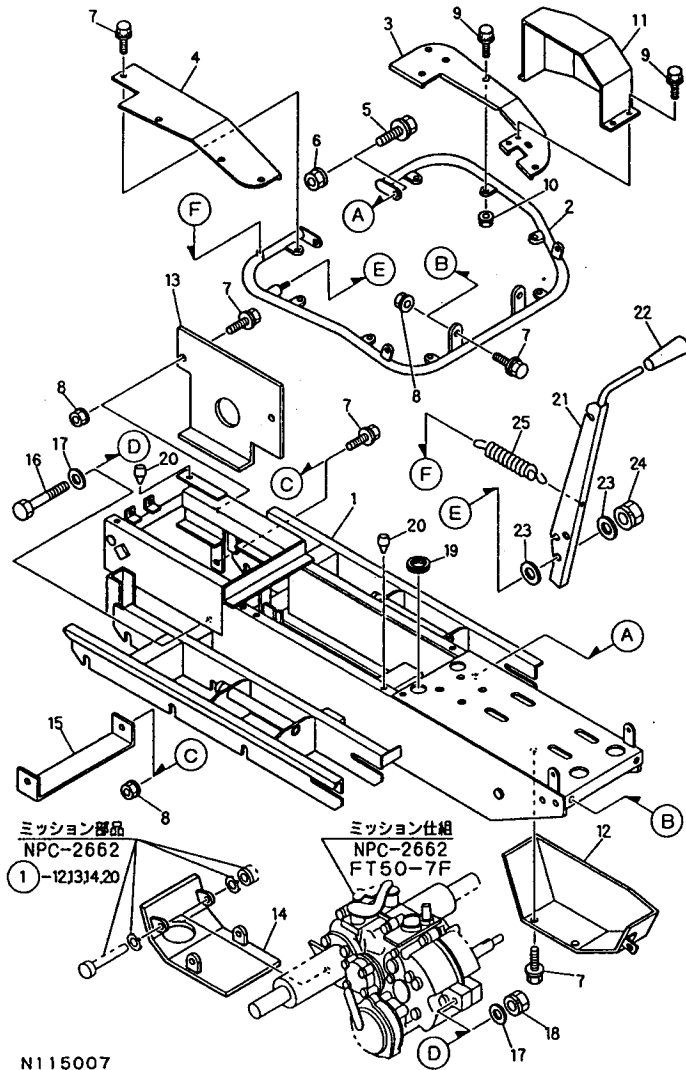
REF. NO.	LEV. 0	PART NO.	DESCRIPTION	-----Q'TY-----						I	P/U	A	R
				(A)	(B)	(C)	(D)	(E)	(F)				
1	-	1N1366-31001	FRAME	1								1	
I 1-1	-	1N1366-31002	FRAME	1								S	(1
		(A=FO11734)											
2	-	1N1366-54000	STEP A	1								1	
3	-	1N1366-54051	STEP R	1								1	
4	-	1N1366-54060	STEP L	1								1	
5	-	26018-100254	BOLT M10X 25	2								10	
6	-	26367-100002	U-NUT M10	2								10	
7	-	26018-080254	BOLT M 8X 25	9								10	
8	-	26367-080002	U-NUT M 8	7								10	
9	-	1N1291-58080	BOLT 6X16 W/P&SW.	12								1	
10	-	26367-060002	NUT M 6	12								30	
I 11	-	1N1367-58020	COVER A,PULLEY	1								1	
12	-	1N1366-58020	COVER A,PULLEY	1								1	
13	-	1N1366-58100	GUARD,PULLEY	1								1	
14	-	1N1366-58110	GUARD A,TRANSMISSION	1								1	
15	-	1N1366-58090	FRAME,UNDER	1								1	
16	-	26117-100804	BOLT 10X80	1								10	
17	-	22137-100000	WASHER 10,POLISHED	2								10	
18	-	26051-100002	NUT M10	1								10	
19	-	1N1121-44000	GROMMET 44	1								1	
20	-	1N1101-44040	RUBBER,STOPPER	2								1	

NO76598

↑-----↑  
 I \* REF. NO.1 IS PROVIDED WITH CIRCLE-  
 I MARKED PARTS WHILE REF. NO.1-1 IS  
 I NOT PROVIDED WITH THE CIRCLE-MARKED.  
 I (1)PART OF OVERSEAS SPECIFICATION  
 I \* PART OF OVERSEAS SPECIFICATION  
 I REF.NO.3 IS EXCLUSIVE FOR UP TO  
 I MACHINE NO.FO11733. FOR MACHINE  
 I NO.FO11734 & ON,PLEASE REFER TO  
 I REF. NO.17.  
 ↑-----↑

REMARKS	
* ミッションNO.1 取付け用 フレームナット, NO.1-1 取付け用 フレームナット (1)取付け用 フレームナット	I * REF. NO.1 IS PROVIDED WITH CIRCLE- I MARKED PARTS WHILE REF. NO.1-1 IS I NOT PROVIDED WITH THE CIRCLE-MARKED.
* コックNO.3) カギNO.FO11733 マチ / 取付け用.FO11734 カギ / コックNO.17 取付け用 カギ	I (1)PART OF OVERSEAS SPECIFICATION I * PART OF OVERSEAS SPECIFICATION I REF.NO.3 IS EXCLUSIVE FOR UP TO I MACHINE NO.FO11733. FOR MACHINE I NO.FO11734 & ON,PLEASE REFER TO I REF. NO.17.

17. BODY FRAME(ADD. ITEM)



N115007

-----  
 !\* REF.NO.17 IS EXCLUSIVE FOR  
 ! DOMESTIC SPECIFICATION.  
 !\* REF. NO.17 IS EXCLUSIVE FOR  
 ! MACHINE NO.FD11734 & ON. FOR UP  
 ! TO MACHINE NO.FD11733, PLEASE  
 ! REFER TO REF. NO.3.

17. BODY FRAME(ADD. ITEM)

96.02-07

-----  
 ! 1C07 !  
 ! (1C05) !  
 -----  
 NPC-2680

(A)=MCG111F (D)=  
 (B)= (E)=  
 (C)= (F)=

REF. NO.	LEV. 0	PART NO.	DESCRIPTION	-----Q'TY-----						I	P	U	A	R
				(A)	(B)	(C)	(D)	(E)	(F)					
1	.	1N1367-31030	FRAME,BODY	1										
2	.	1N1367-54000	STEP(B)	1										
3	.	1N1367-54010	STEP R1	1										
4	.	1N1367-54030	STEP L1	1										
5	.	26018-100254	BOLT M10X 25	2								10		
6	.	26367-100002	U-NUT M10	2								10		
7	.	26018-080254	BOLT M 8X 25	9								10		
8	.	26367-080002	U-NUT M 8	7								10		
9	.	1N1291-58080	BOLT 6X16 W/P&SW.	12								1		
10	.	26367-060002	NUT M 6	9								30		
11	.	7N1367-58000	COVER PL ASSY PULLEY	1										
12	.	1N1367-58140	COVER, PULLEY LOWER	1										
13	.	1N1366-58100	GUARD,PULLEY	1									1	
14	.	1N1366-58110	GUARD A,TRANSMISSION	1									1	
15	.	1N1366-58090	FRAME,UNDER	1									1	
16	.	26117-100804	BOLT 10X80	1									10	
17	.	22137-100000	WASHER 10,POLISHED	2									10	
18	.	26051-100002	NUT M10	1									10	
19	.	1N1121-44000	GROMMET 44	2									1	
20	.	1N1101-44040	RUBBER,STOPPER	4									1	
21	.	1N1367-64090	HALBERD	1										
22	.	1N1101-44020	GRIP 10,BRAKE	1									1	
23	.	22137-120000	WASHER 12,POLISHED	2									10	
24	.	26347-120002	U-NUT M12	1									10	
25	.	1N1210-53010	SPRING 18X105,TENS'N	1									1	

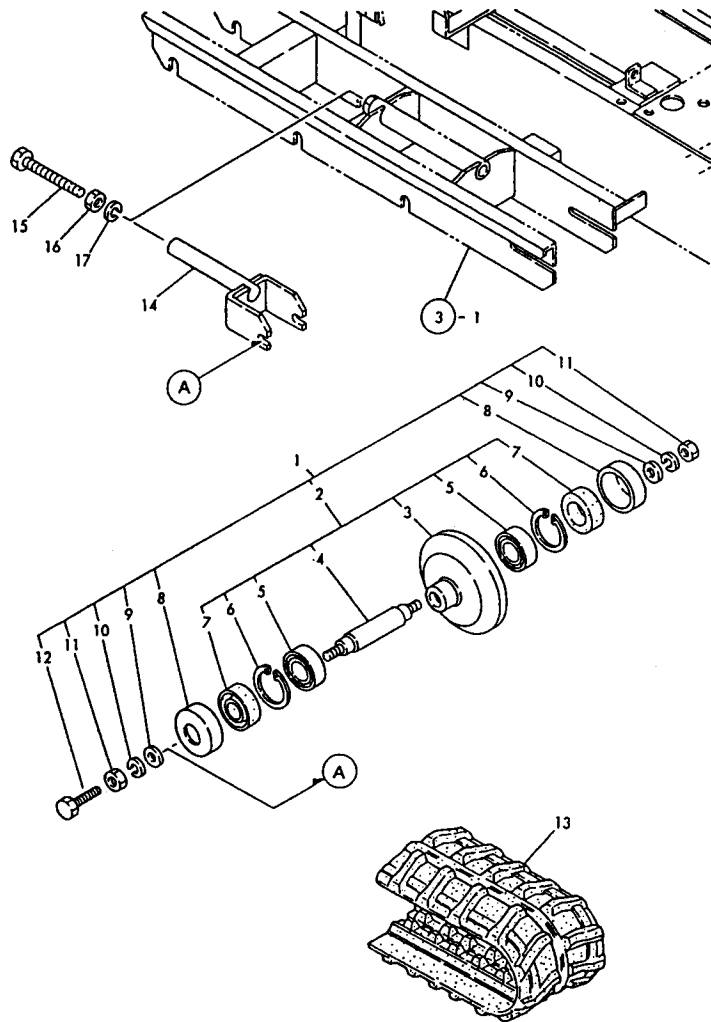
----- REMARKS -----

\*コキマノ.17ハ コキイ センコ  
 !\* REF.NO.17 IS EXCLUSIVE FOR  
 ! DOMESTIC SPECIFICATION.  
 \*コキマノ.17ハ ナイノ.1734カ5ノ センコ  
 !\* REF. NO.17 IS EXCLUSIVE FOR  
 ! MACHINE NO.FD11734 & ON. FOR UP  
 ! TO MACHINE NO.FD11733, PLEASE  
 ! REFER TO REF. NO.3.

-----  
 ! MACHINE NO.FD11734 & ON. FOR UP  
 ! TO MACHINE NO.FD11733, PLEASE  
 ! REFER TO REF. NO.3.

N115007

4. IDLER



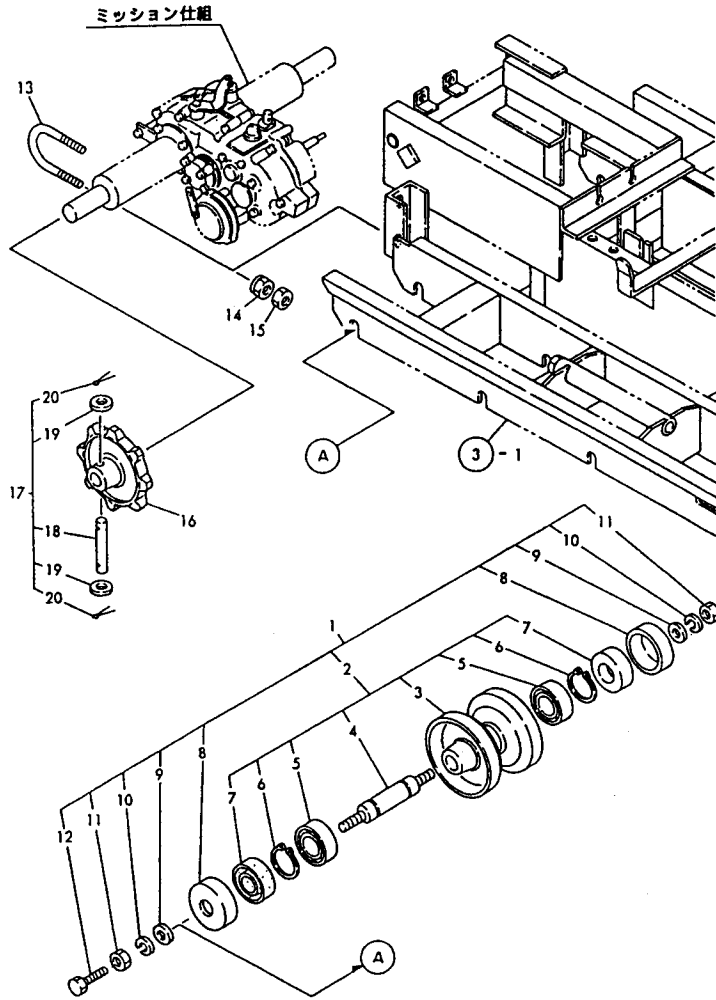
↑-----↑  
 | 1C09 |  
 | (1C08) |  
 ↓-----↓  
 NPC-2680

4. IDLER

(A)=MCG111F (D)=  
 (B)= (E)=  
 (C)= (F)=

REF. NO.	LEV. 0	PART NO.	DESCRIPTION	Q'TY						I	P/U	A	R
				(A)	(B)	(C)	(D)	(E)	(F)				
1	.	7N1540-35051	IDLE WHEEL SET	2								1	
2	..	7N1540-35060	IDLE WHEEL ASSY.	2								1	
3	...	1N1540-35080	IDLER, FRONT	2								1	
4	...	1N1540-35091	SHAFT, IDLER	2								1	
5	...	24102-060044	BALL BEARING	4								1	
6	...	22252-000420	CIRCLIP 42	4								10	
7	...	1N1101-36041	SEAL 204212, OIL	4								1	
8	..	1N1240-35030	BASE, STAND	4								1	
9	..	22137-160000	WASHER 16, POLISHED	4								10	
10	..	22217-160000	SPRING WASHER 16	4								10	
11	..	26717-160002	NUT M16	4								10	
12	..	26117-060084	BOLT M6X 8	2								10	
13	.	1N1296-37000	CRAWLER 180X60X37, RB	2								1	
I 13-	1	1N3506-37000 (A=FD11534)	CRAWLER 180X60X37, RB	2							R	1	
14	.	1N1366-37000	BRACKET A, FRNT. IDLER	2								1	
15	.	26117-161204	BOLT M16X120 PLATED	2								2	
16	.	26717-160002	NUT M16	2								10	
17	.	22217-160000	SPRING WASHER 16	2								10	

5. TRACK ROLLER



NO76600

5. TRACK ROLLER

↑-----↑  
↑ 1C10 ↑  
↑ (1C08) ↑  
↑-----↑  
NPC-2680

96.02.07

(A)=MC6111F (D)=  
(B)= (E)=  
(C)= (F)=

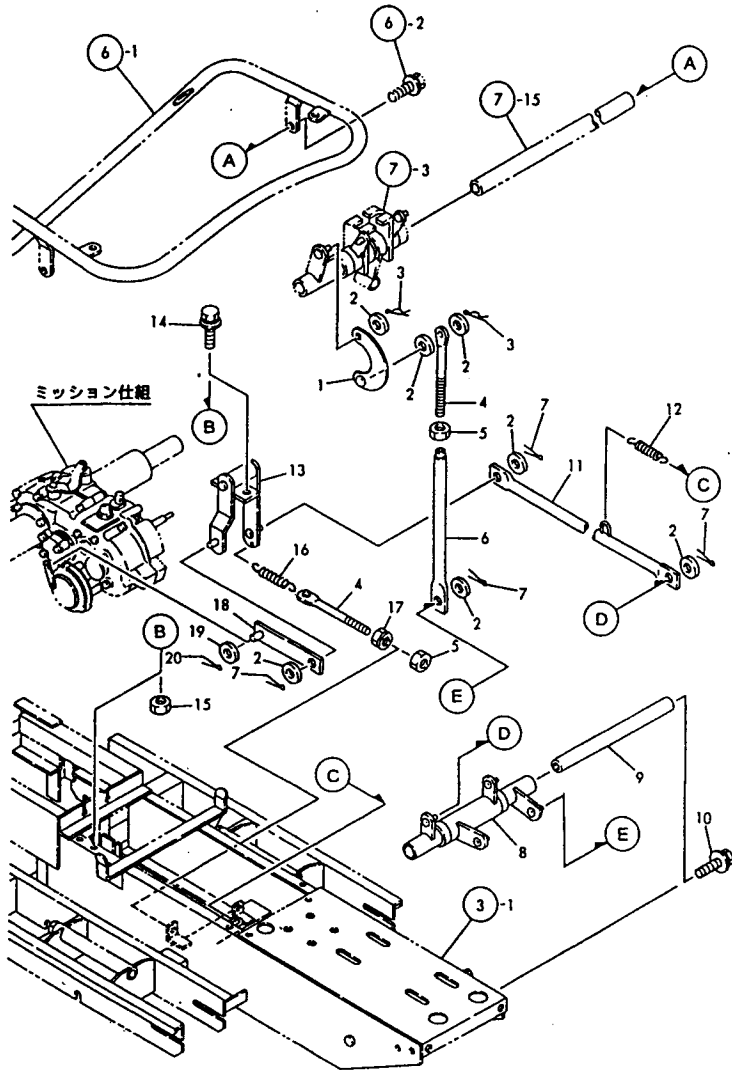
REF. NO.	LEV. 0	PART NO.	DESCRIPTION	Q'TY						I	P	U	A	R
				(A)	(B)	(C)	(D)	(E)	(F)					
1	.	7N1361-36011	LWR.TRANK ROLLER SET	6										1
2	..	7N1361-36001	LWR.TRANK ROLLER ASY	6										1
3	...	1N1361-36000	ROLLER,LOWER TRANK	6										1
4	...	1N1361-35011	SHAFT	6										1
5	...	24101-060044	BALL BEARING 6004	12										1
6	...	22242-000200	CIRCLIP 20	12										10
7	...	24421-204208	SEAL TC20 42 08, OIL	12										1
8	..	1N1240-35030	BASE,STAND	12										1
9	..	22137-160000	WASHER 16,POLISHED	12										10
10	..	22217-160000	SPRING WASHER 16	12										10
11	..	26717-160002	NUT M16	12										10
12	..	26117-060084	BOLT M6X 8	6										10
13	.	1N1210-35100	U-BOLT	2										1
I 13- 1	.	1N3501-35030	U-BOLT	2									R	1
		(A=FO11464)												
14	.	26052-100002	NUT M10 W/SPRING	4										10
15	.	26757-100002	LOCK NUT M10	4										10
16	.	1N1366-35000	SPROCKET	2										1
17	.	7N1296-35000	SPROCKET PIN SET	2										1
18	..	1N1296-35000	PIN,SPROCKET	2										1
19	..	22137-100000	WASHER 10,POLISHED	4										10
20	..	22417-250250	COTTER PIN 2.5X25	4										10

NO76600





8. BRAKE LEVER



NO76603

(1)(EXPORT)EXCLUSIVE PARTS

FOR MCG111F-PQR  
 \* PART OF OVERSAES SPECIFICATION  
 REF. NO.8 IS EXCLUSIVE FOR UP TO

MACHINE NO.F011733. FOR MACHINE  
 NO.F011734 & ON, PLEASE REFER TO  
 REF. NO20.

8. BRAKE LEVER

96.02.07

↑-----↑  
 | 1C14 |  
 | (1C11) |  
 ↑-----↑  
 NPC-2680

(A)=MCG111F (D)=  
 (B)= (E)=  
 (C)= (F)=

REF. NO.	LEV. 0	PART NO.	DESCRIPTION	-----Q'TY-----						I P/U A R
				(A)	(B)	(C)	(D)	(E)	(F)	
1	-	1N1360-22130	LINK,CRESCENT	1						1
2	-	22137-080000	WASHER 8, POLISHED	7						10
3	-	22360-080000	SNAP PIN 8	2						10
4	-	1N1110-42001	ROD A,CLUTCH BRAKE	2						1
5	-	26757-080002	LOCK NUT M 8 PLATED	2						10
6	-	1N1360-22141	ROD,CLUTCH	1						1
7	-	22417-250200	COTTER PIN 2.5X20	4						10
8	-	1N1366-41020	LINK,CHANGE BRAKE	1						1
9	-	1N1366-42160	SHAFT A,FULCRUM	1						1
10	-	26018-100254	BOLT M10X 25	2						10
11	-	1N1366-42250	ROD C.BRAKE	1						1
12	-	1N1190-45000	SPRING 11X72.5,TENS.	1						1
13	-	1N1366-42200	LINK A,BRAKE	1						1
14	-	26018-080254	BOLT M 8X 25	2						10
15	-	26367-080002	U-NUT M 8	2						10
16	-	1N1151-53010	SPRING 16.5X76,TENS.	1						1
17	-	26051-080002	NUT M 8	1						20
18	-	1N1366-42180	ROD A,BRAKE	1						1
19	-	22137-060000	WASHER 6, POLISHED	1						10
20	-	22417-200160	COTTER PIN 2.0X16	1						10

REMARKS (1)MCG111F-PQRヲ用 止セテハ(止メテ) (1)(EXPORT)EXCLUSIVE PARTS

\* 止セテNO.8ハ 止メテNO.F011733 止メテ / 止メテ | FOR MCG111F-PQR  
 F011734ハ止メテNO.20ヲ 止メテハ止メテハ止メテ | \* PART OF OVERSAES SPECIFICATION  
 REF. NO.8 IS EXCLUSIVE FOR UP TO

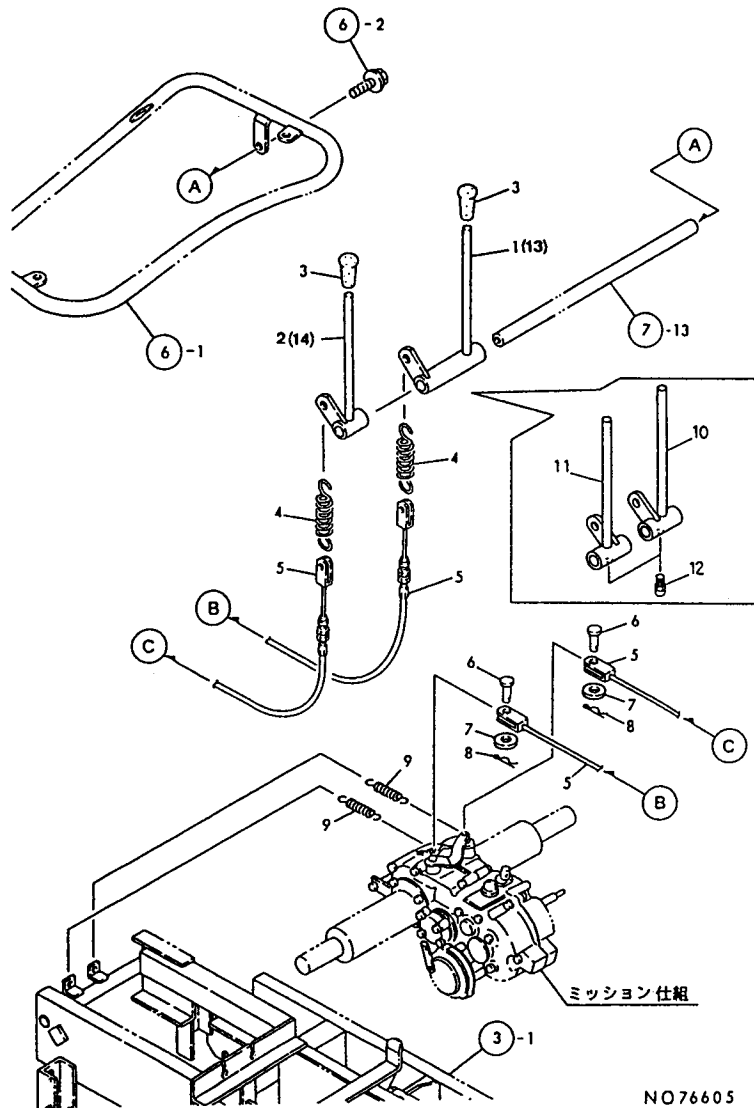
MACHINE NO.F011733. FOR MACHINE  
 NO.F011734 & ON, PLEASE REFER TO  
 REF. NO20.

NO76603





10. SIDE CLUTCH LEVER



(1) PARTS OF OVERSEAS SPECIFICATION  
 (2) PARTS OF DOMESTIC SPECIFICATION

10. SIDE CLUTCH LEVER

96.02.07

↑-----↑  
 ↑ 1C16 ↑  
 ↑ (1C11) ↑  
 ↑-----↑  
 NPC-2680

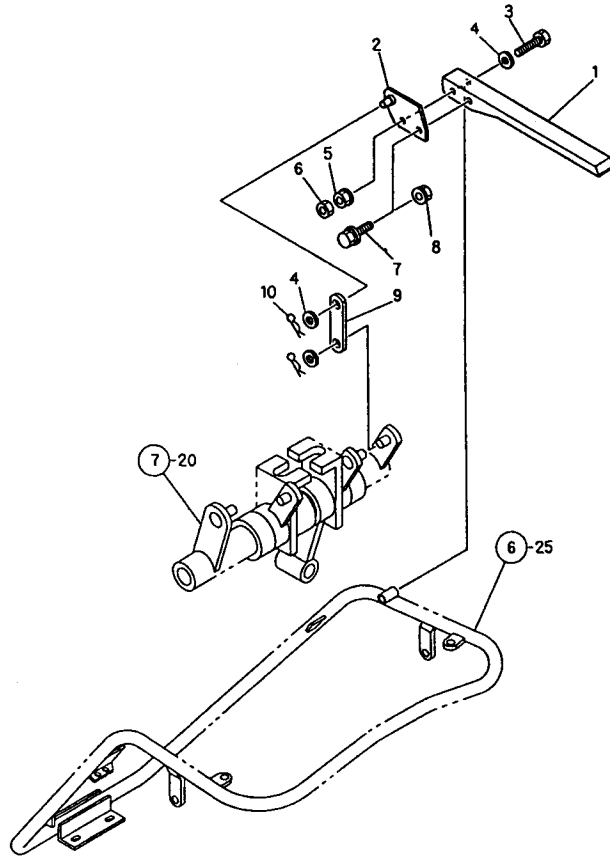
(A)=MCG111F (D)=  
 (B)= (E)=  
 (C)= (F)=

REF. NO.	LEV. 0	PART NO.	DESCRIPTION	-----Q'TY-----						I	P/U	A	R
				(A)	(B)	(C)	(D)	(E)	(F)				
I 1	-	1N1367-44000 (A=F011734)	LEVER R,SIDE CLUTCH	1						Z		1	
I 2	-	1N1367-44010 (A=F011734)	LEVER L,SIDE CLUTCH	1						Z		1	
3	-	1N1101-44010	GRIP 10,CLUTCH	2								1	
4	-	1N1210-53030	SPRING 21.5X78,TENS.	2								1	
5	-	1N1366-51000	WIRE,CONTROL	2								1	
6	-	1N1210-42140	RIVET	2								1	
7	-	22137-080000	WASHER 8, POLISHED	2								10	
8	-	22360-080000	SNAP PIN 8	2								10	
9	-	1N1190-45000	SPRING 11X72.5,TENS.	2								1	
I 10	-	1N1367-44040	LEVER L1, SIDE CLUTCH	1							W		(2)
I 11	-	1N1367-44050 (A=F011734)	LEVER R1, SIDE CLUTCH	1							W		(2)
I 12	-	24761-010000 (A=F011734)	NIPPLE M6F, GREASE	2							W	5	(2)
I 13	-	1N1367-44000 (A=F011734)	LEVER R,SIDE CLUTCH	1							W	1	(1)
I 14	-	1N1367-44010 (A=F011734)	LEVER L,SIDE CLUTCH	1							W	1	(1)

REMARKS  
 (1) 海外仕様部品 (F011734カ)  
 (2) 国内仕様部品

(1) PARTS OF OVERSEAS SPECIFICATION  
 (2) PARTS OF DOMESTIC SPECIFICATION

14. DEADMAN LEVER(ADD. ITEM



N112532

-----  
 | (1) GROUP NO.14(EXPORT) EXCLUSIVE  
PARTS FOR MCG111F-PQR

-----  
 | 1D01 |  
(1C11)
 NPC-2680

14. DEADMAN LEVER(ADD. ITEM

96.02.07

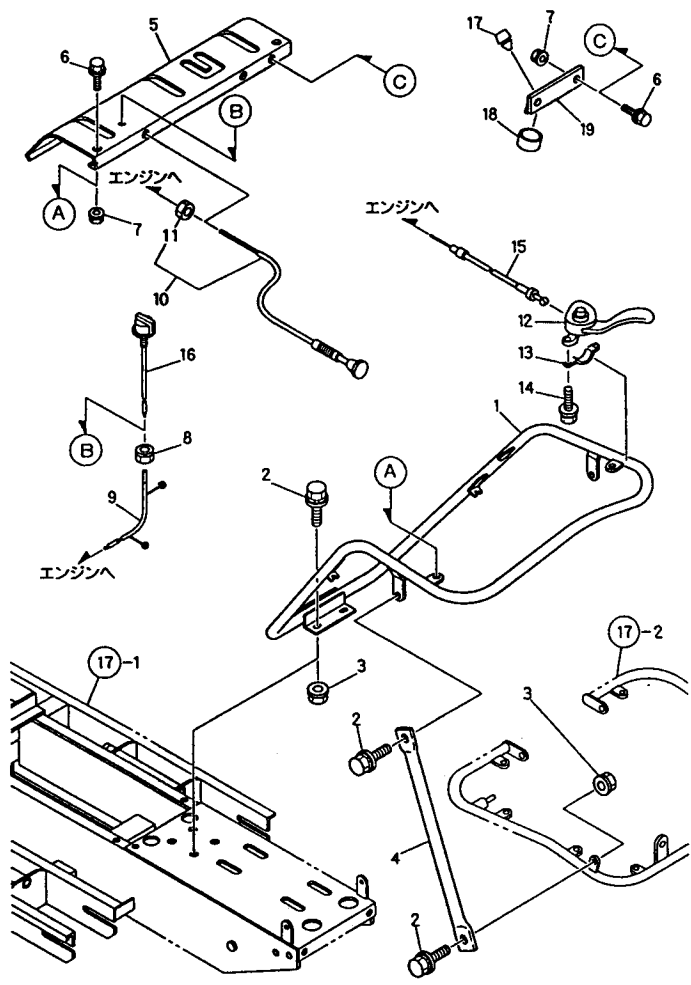
(A)=MCG111F (D)=  
 (B)= (E)=  
 (C)= (F)=

REF. NO.	LEV. 0	PART NO.	DESCRIPTION	-----Q'TY-----						I	P/U	A	R
				(A)	(B)	(C)	(D)	(E)	(F)				
1	.	1N1723-31360	LEVER, DEADMAN	1								1	
2	.	1N1367-42120	BRACKET A, DEADMN.LVR	1								10	
3	.	26116-080552	BOLT M 8X 55 PLATED	1									
4	.	22137-080000	WASHER 8, POLISHED	3								10	
5	.	26347-080002	U-NUT M 8	1								10	
6	.	26757-080002	LOCK NUT M 8 PLATED	1								10	
7	.	26018-080204	BOLT M 8X 20	1								20	
8	.	26367-080002	U-NUT M 8	1								10	
9	.	1N1367-42160	LEVER	1									
10	.	22360-080000	SNAP PIN 8	2								10	

-----  
 | REMARKS |  
 | (1) GROUP NO.14(EXPORT) EXCLUSIVE |  
PARTS FOR MCG111F-PQR

N112532

18. HANDLE(ADD. ITEM)



N115008

-----  
 | \* REF.NO.18 IS EXCLUSIVE FOR  
 | DOMESTIC SPECIFICATION.  
 | \* REF. NO.18 IS EXCLUSIVE FOR  
 | MACHINE NO.FO11734 & ON. FOR UP  
 | TO MACHINE NO.FO11733, PLEASE  
REFER TO REF. NO.6.

18. HANDLE(ADD. ITEM)

96.02.07

-----  
 | 1002 |  
(1C11)
 NPC-2680

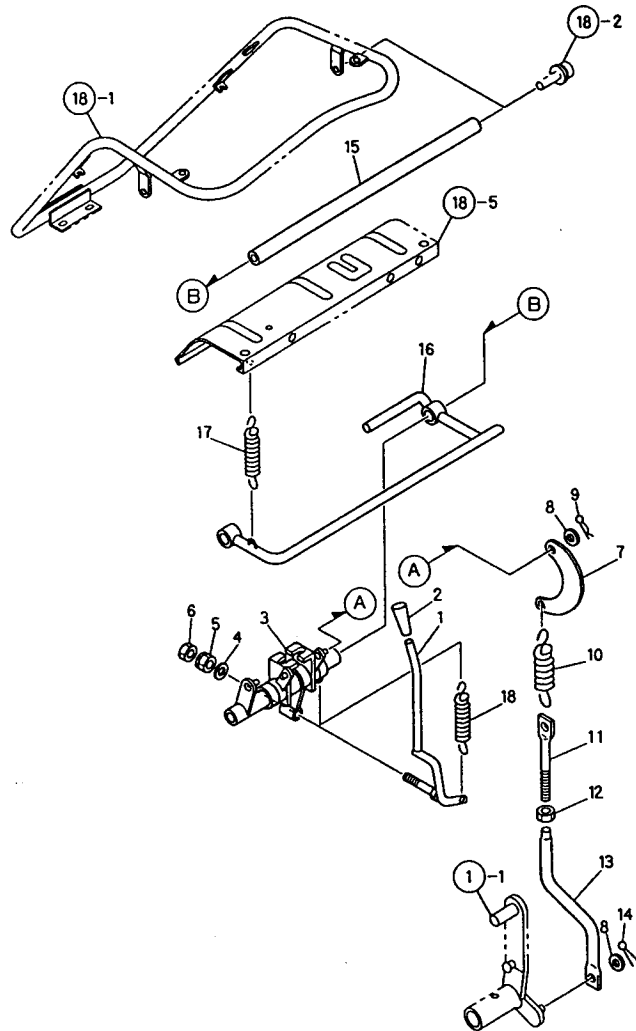
(A)=MCG111F (D)=  
 (B)= (E)=  
 (C)= (F)=

REF. NO.	LEV. 0	PART NO.	DESCRIPTION	Q'TY						I P/U A R
				(A)	(B)	(C)	(D)	(E)	(F)	
1	-	1N1367-47000	HANDLE B	1						
2	-	26018-100254	BOLT M10X 25	8						10
3	-	26367-100002	U-NUT M10	6						10
4	-	1N1366-47040	STAY 10,HANDLE	2						1
5	-	7N1367-58000	COVER PL ASSY PULLEY	1						1
6	-	1N1291-58080	BOLT 6X16 W/P&SW.	6						
7	-	26367-060002	NUT M 6	6						30
8	-	26051-080002	NUT M 8	1						20
9	-	1N1367-52000	LEAD WIRE (B)	1						
10	-	1N1277-51010	WIRE,CHOKE	1						1
11	-	26717-100002	NUT M10	1						10
12	-	1N1277-42320	LEVER B,CLUTCH COMB.	1						1
13	-	1N1277-42300	LEVER B,CLUTCH	1						1
14	-	26014-060259	BOLT 6X25 W/PL.&SP.W	2						10
15	-	1N3500-51010	WIRE,THROTTLE	1						1
16	-	1A1470-40900	SWITCH,STOP	1						1
17	-	1N1101-44040	RUBBER,STOPPER	1						1
18	-	1N1367-42080	HOSE,VINYL	1						1
19	-	1N1367-42050	STOPPER,CLUTCH	1						1

----- REMARKS -----  
 \*コクモクNO.18は コクノイ センゾウ | \* REF.NO.18 IS EXCLUSIVE FOR  
 \*コクモクNO.18は ヤタノ.FO11734から ノ センゾウ | DOMESTIC SPECIFICATION.  
 FO117733まで は コクモクNO.6を センゾウ 部品に代用 | \* REF. NO.18 IS EXCLUSIVE FOR  
 | MACHINE NO.FO11734 & ON. FOR UP  
 | TO MACHINE NO.FO11733, PLEASE  
REFER TO REF. NO.6.

N115008

19. TRAVEL LEVER(ADD. ITEM



N115009

-----  
 I \* REF.NO.19 IS EXCLUSIVE FOR  
 I DOMESTIC SPECIFICATION.  
 I \* REF. NO.19 IS EXCLUSIVE FOR  
 I MACHINE NO.F011734 & ON. FOR UP  
 I TO MACHINE NO.F011733, PLEASE  
 I REFER TO REF. NO.7.

-----  
 I 1003 I  
 I (1C11) I  
 -----  
 NPC-2680

19. TRAVEL LEVER(ADD. ITEM

96.02.07

(A)=HCG111F (D)=  
 (B)= (E)=  
 (C)= (F)=

REF. NO.	LEV. 0	PART NO.	DESCRIPTION	-----Q'TY-----						I P/U A R
				(A)	(B)	(C)	(D)	(E)	(F)	
1	-	1N1367-42210	LEVER A,CLUTCH	1						
2	-	1N1101-44030	GRIP 10,BRAKE RED	1						1
3	-	1N1367-42200	LINK A, CLUTCH-BRAKE	1						
4	-	22137-120000	WASHER 12,POLISHED	1						10
5	-	26051-120002	NUT M12	1						10
6	-	26757-120002	LOCK NUT M12 PLATED	1						10
7	-	1N1240-42050	LINK,CRESCENT	2						1
8	-	22137-080000	WASHER 8, POLISHED	4						10
9	-	22360-080000	SNAP PIN 8	2						10
10	-	1N1210-53030	SPRING 21.5X78,TENS.	2						1
11	-	1N1360-22090	SCREW 8X94,ADJUST	2						1
12	-	26757-080002	LOCK NUT M 8 PLATED	2						10
13	-	1N1367-42350	ROD	2						
14	-	22417-250200	COTTER PIN 2.5X20	2						10
15	-	1N1366-42170	SHAFT B,FULCRUM	1						1
16	-	1N1367-42330	LEVER A,SAFETY	1						
17	-	1N1151-53000	SPRING 12.5X54,TENS.	1						1
18	-	1N1190-45000	SPRING 11X72.5,TENS.	1						1

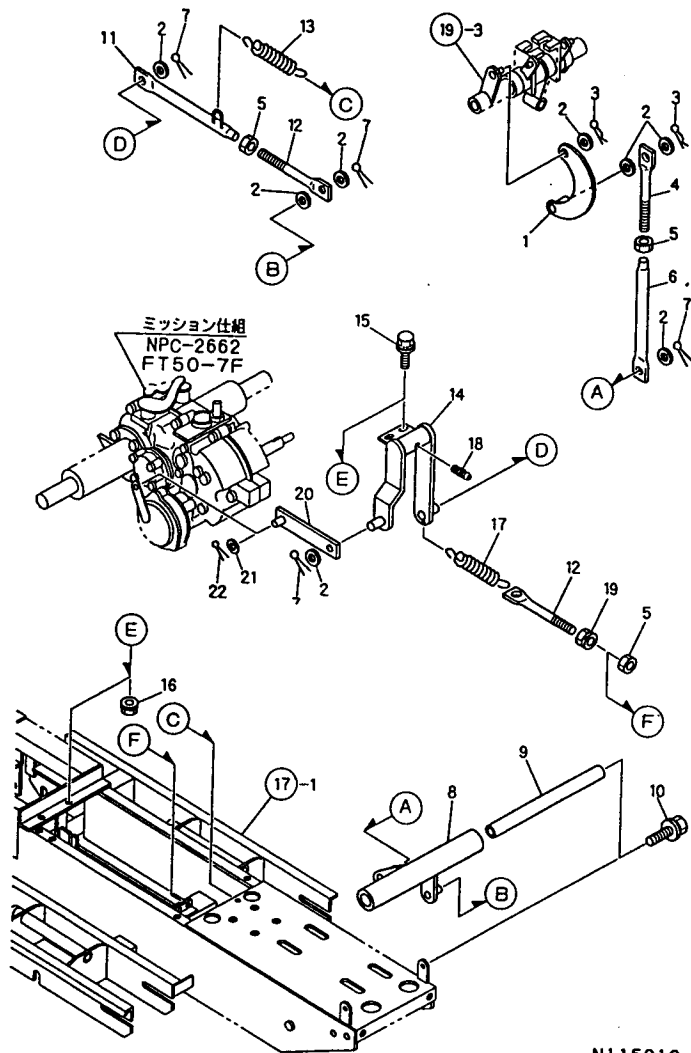
----- REMARKS -----

\* REF.NO.19 IS EXCLUSIVE FOR  
 DOMESTIC SPECIFICATION.  
 \* REF. NO.19 IS EXCLUSIVE FOR  
 MACHINE NO.F011734 & ON. FOR UP  
 TO MACHINE NO.F011733, PLEASE  
 REFER TO REF. NO.7.

I \* REF.NO.19 IS EXCLUSIVE FOR  
 I DOMESTIC SPECIFICATION.  
 I \* REF. NO.19 IS EXCLUSIVE FOR  
 I MACHINE NO.F011734 & ON. FOR UP  
 I TO MACHINE NO.F011733, PLEASE  
 I REFER TO REF. NO.7.

N115009

20. BRAKE LEVER(ADD. ITEM)



N115010

-----  
 | \* REF.NO.20 IS EXCLUSIVE FOR  
 | DOMESTIC SPECIFICATION.  
 | \* REF. NO.20 IS EXCLUSIVE FOR  
 | MACHINE NO.F011734 & ON. FOR UP  
 | TO MACHINE NO.F011733, PLEASE  
REFER TO REF. NO.8.

20. BRAKE LEVER(ADD. ITEM)

96.02.07

↑-----↑  
 | 1004 |  
 | (1C11) |  
 ↓-----↓  
 NPC-2680

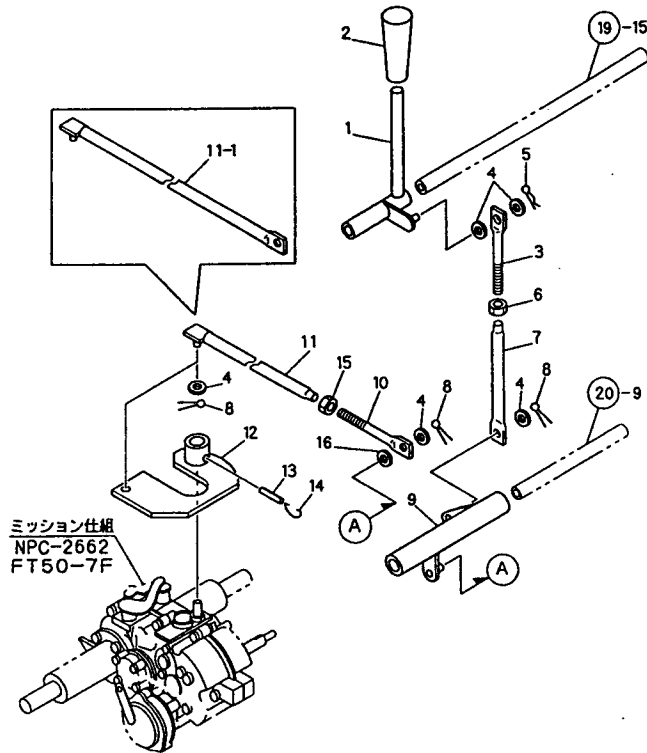
(A)=MC6111F (D)=  
 (B)= (E)=  
 (C)= (F)=

REF. NO.	LEV. 0	PART NO.	DESCRIPTION	Q'TY						I P/U A R
				(A)	(B)	(C)	(D)	(E)	(F)	
1	.	1N1360-22130	LINK,CRESCENT	1						1
2	.	22137-080000	WASHER 8, POLISHED	8						10
3	.	22360-080000	SNAP PIN 8	2						10
4	.	1N1360-22090	SCREW 8X94,ADJUST	1						1
5	.	26757-080002	LOCK NUT M 8 PLATED	3						10
6	.	1N1700-41020	ROD A,CHANGE	1						1
7	.	22417-250200	COTTER PIN 2.5X20	4						10
8	.	1N1367-42250	LINK,BRAKE	1						1
9	.	1N1367-42230	SHAFT C, FULCRUM	1						1
10	.	26018-100254	BOLT M10X 25	2						10
11	.	1N1367-42310	ROD,BRAKE	1						1
12	.	1N1110-42001	ROD A,CLUTCH BRAKE	2						1
13	.	1N1190-45000	SPRING 11X72.5,TENS.	1						1
14	.	1N1367-42270	LINK,BRAKE	1						1
15	.	26018-080254	BOLT M 8X 25	2						10
16	.	26367-080002	U-NUT M 8	2						10
17	.	1N1151-53010	SPRING 16.5X76,TENS.	1						1
18	.	24761-010000	NIPPLE M6F, GREASE	1						5
19	.	26051-080002	NUT M 8	1						20
20	.	1N1366-42180	ROD A,BRAKE	1						1
21	.	22137-060000	WASHER 6, POLISHED	1						10
22	.	22417-200160	COTTER PIN 2.0X16	1						10

----- REMARKS -----  
 \*コックNO.20はコック仕様  
 \*コックNO.20はコック仕様 / 仕様  
 F0117733はコックNO.8の仕様を参照してください  
 | \* REF.NO.20 IS EXCLUSIVE FOR  
 | DOMESTIC SPECIFICATION.  
 | \* REF. NO.20 IS EXCLUSIVE FOR  
 | MACHINE NO.F011734 & ON. FOR UP  
 | TO MACHINE NO.F011733, PLEASE  
REFER TO REF. NO.8.

N115010

21. MAIN CHANGE LEVER(ADD. ITEM)



ミッション仕組  
NPC-2662  
FT50-7F

N115011

-----  
I\* REF.NO.21 IS EXCLUSIVE FOR  
I DOMESTIC SPECIFICATION.  
I\* REF. NO.21 IS EXCLUSIVE FOR

I MACHINE NO.FO11734 & ON. FOR UP  
I TO MACHINE NO.FO11733, PLEASE  
I REFER TO REF. NO.9.

-----  
I 1005 I  
I (1C11) I  
-----  
NPC-2680

21. MAIN CHANGE LEVER(ADD. ITEM)

96.02.07

(A)=MCG111F (D)=  
(B)= (E)=  
(C)= (F)=

REF. NO.	LEV. 0	PART NO.	DESCRIPTION	-----Q'TY----- I P/U A R						
				(A)	(B)	(C)	(D)	(E)	(F)	
1	.	1N1367-41050	LEVER A, CHANGE	1						
2	.	1N1101-44020	GRIP 10, BRAKE	1					1	
3	.	1N1360-22090	SCREW 8X94, ADJUST	1					1	
4	.	22137-080000	WASHER 8, POLISHED	5					10	
5	.	22360-080000	SNAP PIN 8	1					10	
6	.	26757-080002	LOCK NUT M 8 PLATED	1					10	
7	.	1N1367-41060	ROD 1, CHANGE	1						
8	.	22417-250200	COTTER PIN 2.5X20	3					10	
9	.	1N1367-42240	LINK, CHANGE	1						
10	.	1N1360-22090	SCREW 8X94, ADJUST	1					Z	1
		(A=FO11855 )								
11	.	1N1367-41070	ROD 2, CHANGE	1						
11-1	.	1N1367-41090	ROD 3, CHANGE	1					S	
		(A=FO11855 )								
12	.	1N1367-41030	HEAD A, CHANGE	1						
13	.	22351-050025	SPRING PIN 5X25	1					10	
14	.	1N1100-41000	CIRCLIP 24.8, CHANGE	1					1	
15	.	26757-080002	LOCK NUT M 8 PLATED	1					Z	10
		(A=FO11855 )								
16	.	22137-080000	WASHER 8, POLISHED	1					Z	10
		(A=FO11855 )								

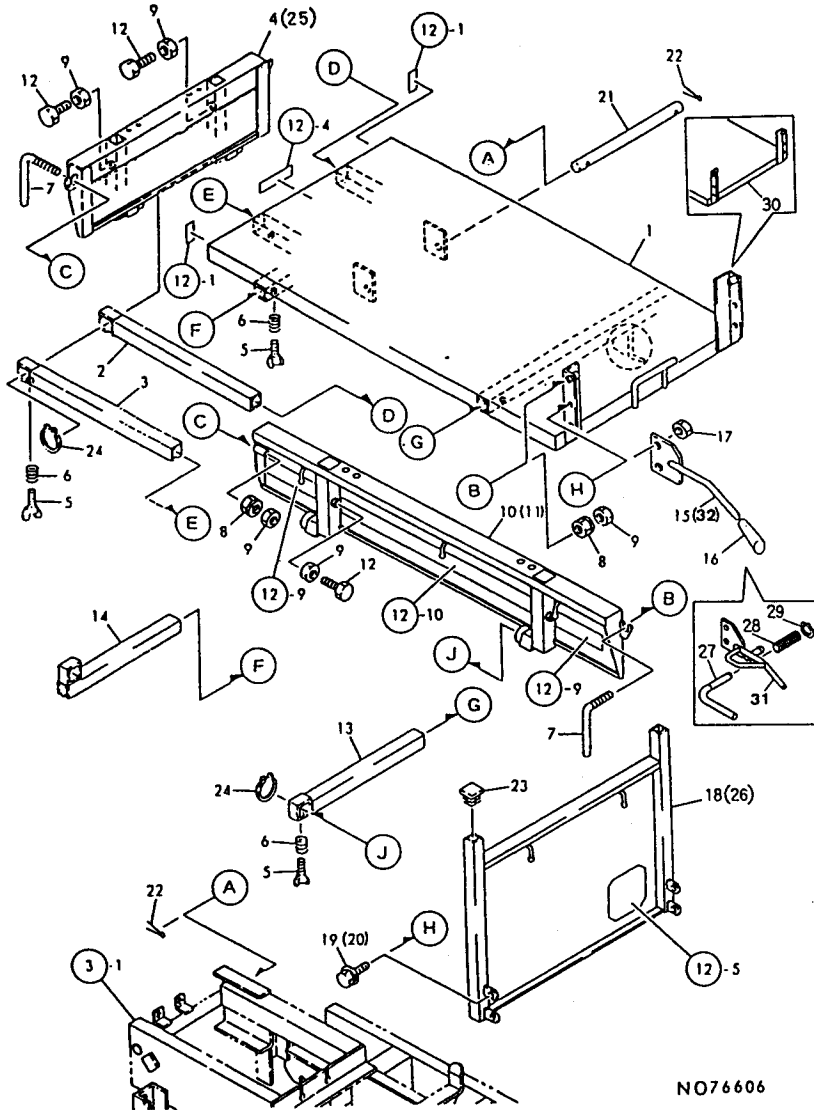
----- REMARKS -----

\*カクノ.21) カクイ セツカ I\* REF.NO.21 IS EXCLUSIVE FOR  
\*カクノ.21) カクイNO.FO11734カク / セツカ I DOMESTIC SPECIFICATION.  
FO117733カクノ.9) カクイカクノ.9) カクイカクノ.9) I\* REF. NO.21 IS EXCLUSIVE FOR

I MACHINE NO.FO11734 & ON. FOR UP  
I TO MACHINE NO.FO11733, PLEASE  
I REFER TO REF. NO.9.

N115011

11. PLATFORM CARRIER



(1) PARTS OF DOMESTIC SPECIFICATION  
 (2) PARTS OF OVERSEAS SPECIFICATION

I\* REF. NO.1-1 IS PROVIDED WITH CIRCLE  
 I -MARKED PART WHILE REF. NO.1 IS NOT  
 I PROVIDED WITH THE CIRCLE-MARKED.

↑-----↑  
 I 1007 I  
 I (1006) I  
 ↓-----↓  
 NPC-2680

11. PLATFORM CARRIER

96.02.07

(A)=MCG111F (D)=  
 (B)= (E)=  
 (C)= (F)=

REF. NO.	LEV. 0	PART NO.	DESCRIPTION	Q'TY						I	P/U	A	R
				(A)	(B)	(C)	(D)	(E)	(F)				
1	-	1N1367-64000	CARRIER, PLATFORM	1							1		
I 1-1	-	1N1367-64001 (A=FO11734 )	CARRIER, PLATFORM	1							S		(2
2	-	1N1367-65030	PIPE C, SLIDE	1									1
3	-	1N1367-65040	PIPE D, SLIDE	1									1
I 4	-	7N1367-66000	PANEL PL ASSY., FRONT	1									(1
5	-	26647-100302	BOLT 10X30, WING	6									10
6	-	1N1151-53020	SPRING 10.5X25, COMPR	6									1
7	-	1N1210-65090	HANDLE 90, SET	4									1
8	-	26051-100002	NUT M10	4									10
9	-	26757-100002	LOCK NUT M10	10									10
10	-	1N1367-65080	PLATE L, SIDE	1									1
11	-	1N1367-65050	PLATE R, SIDE	1									1
12	-	26117-100254	BOLT M10X25 PLATED	6									5
13	-	1N1367-65000	PIPE A, SLIDE	2									1
14	-	1N1367-65020	PIPE B, SLIDE	2									1
I 15	-	1N1293-64060 (A=FO11734 )	LEVER A, DMMP	1							Z		1
16	-	1N1101-44000	GRIP, SIDE CLUTCH	1									1
17	-	26367-080002	U-NUT M 8	1									10
I 18	-	7N1367-66010	PANEL PL ASSY., REAR	1									(1
19	-	26018-080254	BOLT M 8X 25	2									10
20	-	26018-080254	BOLT M 8X 25	2									10
21	-	1N1366-64250	PIN, FULCRUM	1									1
22	-	22417-400300	COTTER PIN 4.0X30	2									10
23	-	1N1227-53010	BELLOWS, SQ. OIL PLUG	2									1
I 24	-	22242-000300	CIRCLIP 30	3									10
I 25	-	1N1367-66000	PLATE A, FRONT	1									1 (2
I 26	-	1N1367-66020	PLATE A, BACK	1									1 (2
I 27	-	1N3540-64120	PIN, LOCK	1							W		(1
		(A=FO11734 )											
I 28	-	1N1151-53020 (A=FO11734 )	SPRING 10.5X25, COMPR	1							W		1 (1
I 29	-	22242-000100 (A=FO11734 )	CIRCLIP 10	1							W		10 (1
I 30	-	1N1367-64080	CARRIER B, PLATFORM	1									(1
		(A=FO11734 )											
I 31	-	1N1367-64110 (A=FO11734 )	LEVER 1, DUNP	1									(1
I 32	-	1N1293-64060 (A=FO11734 )	LEVER A, DMMP	1							W		1 (2

REMARKS

(1) 国内仕様部品  
 (2) 海外仕様部品

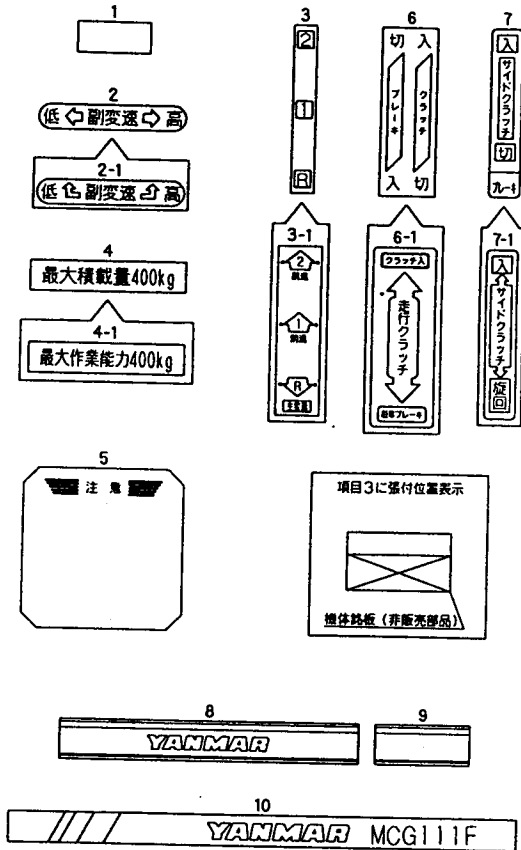
\* 図面NO.1 マルチマークが施された部材は、  
 NO.1-1 マルチマークが施された部材です。

(1) PARTS OF DOMESTIC SPECIFICATION  
 (2) PARTS OF OVERSEAS SPECIFICATION

I\* REF. NO.1-1 IS PROVIDED WITH CIRCLE  
 I -MARKED PART WHILE REF. NO.1 IS NOT  
 I PROVIDED WITH THE CIRCLE-MARKED.



12. LABELS



NO76607

↑-----↑  
↑ 1D09 ↑  
↑ (1D08) ↑  
↑-----↑  
NPC-2680

12. LABELS

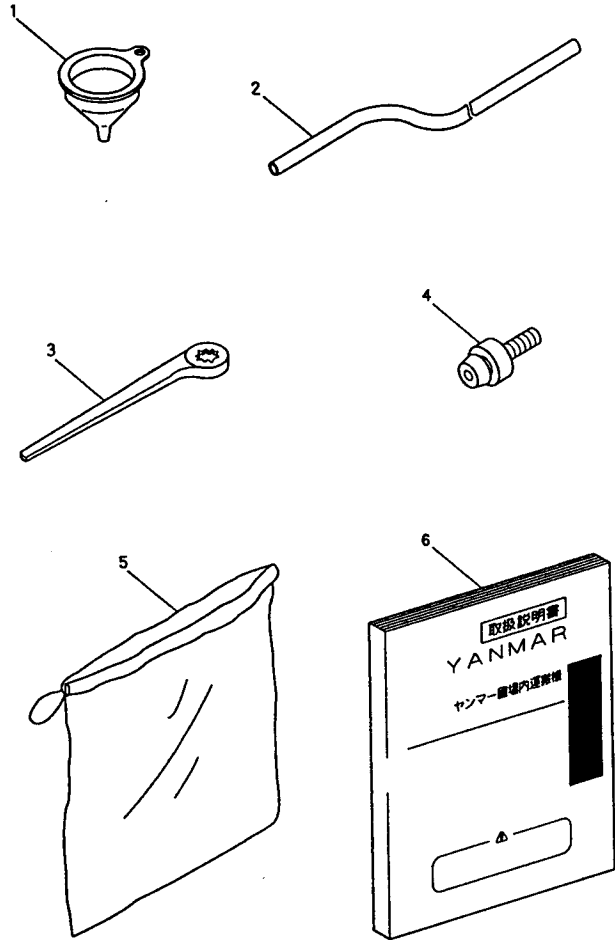
(A)=MCG111F (D)=  
(B)= (E)=  
(C)= (F)=

96.02-07

REF. NO.	LEV. 0	PART NO.	DESCRIPTION	Q'TY					I	P	U	A	R
				(A)	(B)	(C)	(D)	(E)					
1	.	1N1070-93050	TAPE, REFLECTIVE	4									4
2	.	1N1272-93070	PLATE, SUB-CHANGE	1									1
I 2-1	.	1N3505-93150	LABEL, SUB CHANGE	1								S	
(A=F011734)													
3	.	1N1296-93030	PLATE, CHANGE	1									1
I 3-1	.	1N3544-93080	LABEL, MAIN CHANGE	1								S	
(A=F011734)													
4	.	1N1296-93050	PLATE 400, LOADAGE	1									1
I 4-1	.	1N1367-93060	CAPACITY 400, MAX. WK.	1								S	
(A=F011734)													
I 5	.	1N1480-93080	NAMER D, HANDLING	1								Z	1
(A=F011734)													
6	.	1N3500-93030	LABEL, CLUTCH	1									1
I 6-1	.	1N3544-93060	LABEL, TRV. CLTC. BRAKE	1								S	
(A=F011734)													
7	.	1N1110-93020	LABEL, SIDE CLUTCH	1									1
I 7-1	.	1N3544-93070	LABEL, SIDE CLUTCH	2								S	
(A=F011734)													
8	.	1N1277-93020	STICKER A, SIDE	2									1
I 9	.	1N1277-93030	STICKER B, SIDE	4									1
10	.	1N1367-93010	NAMER "MCG111F", MODEL	1									1

NO76607

13. TOOLS & ACCESSORIES



NO76608

↑-----↑  
↑ 1D10 ↑  
↑ (1D08) ↑  
↑-----↑  
NPC-2680

13. TOOLS & ACCESSORIES

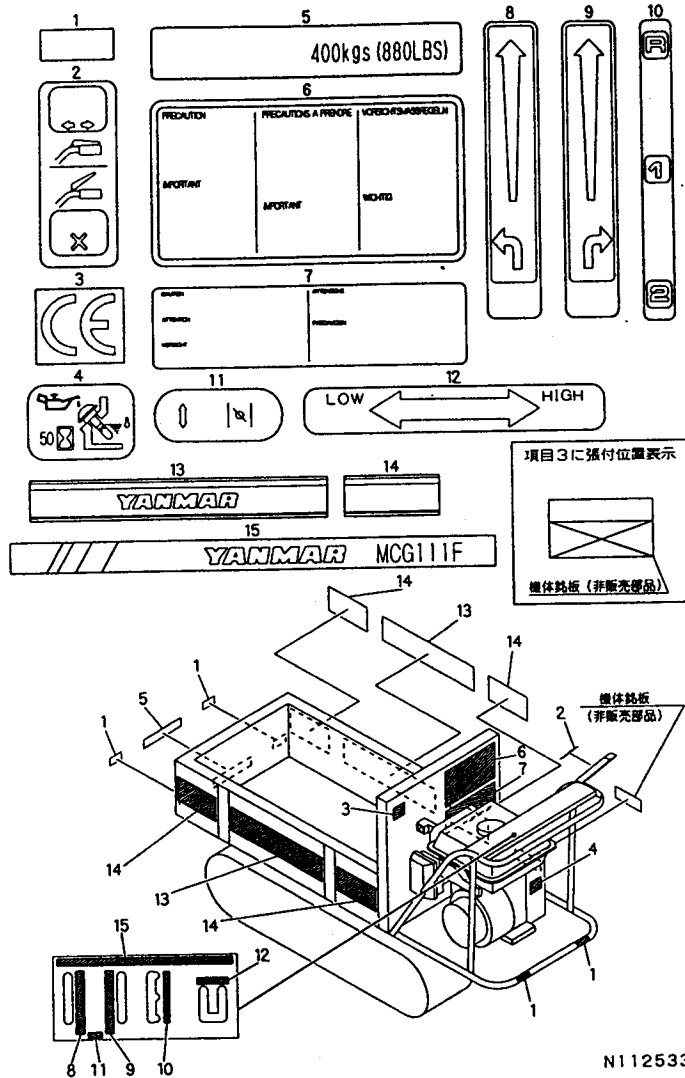
96.02.07

(A)=MCG111F (D)=  
(B)= (E)=  
(C)= (F)=

REF. NO.	LEV. 0	PART NO.	DESCRIPTION	Q'TY						I	P	U	A	R
				(A)	(B)	(C)	(D)	(E)	(F)					
1	.	1N1070-91010	FUNNEL	1										1
2	.	1N1070-91020	HOSE	1										1
3	.	1N1070-91030	WRENCH 24.0FFSET	1										1
4	.	24761-060000	NIPPLE MT6X1, GREASE	2										5
5	.	1N1070-91090	BAG, TOOL	1										1
I 6	.	1N1367-95000	INSTRUCTION BOOK	1										

NO76608

15. LABELS(ADD. ITEM)



N112533

↑-----↑  
 | (1) GROUP NO.15(EXPORT) EXCLUSIVE  
 | PARTS FOR MCG111F-PQR

↑-----↑  
 | (1) GROUP NO.15(EXPORT) EXCLUSIVE  
 | PARTS FOR MCG111F-PQR

15. LABELS(ADD. ITEM)

(A)=MCG111F (D)=  
 (B)= (E)=  
 (C)= (F)=

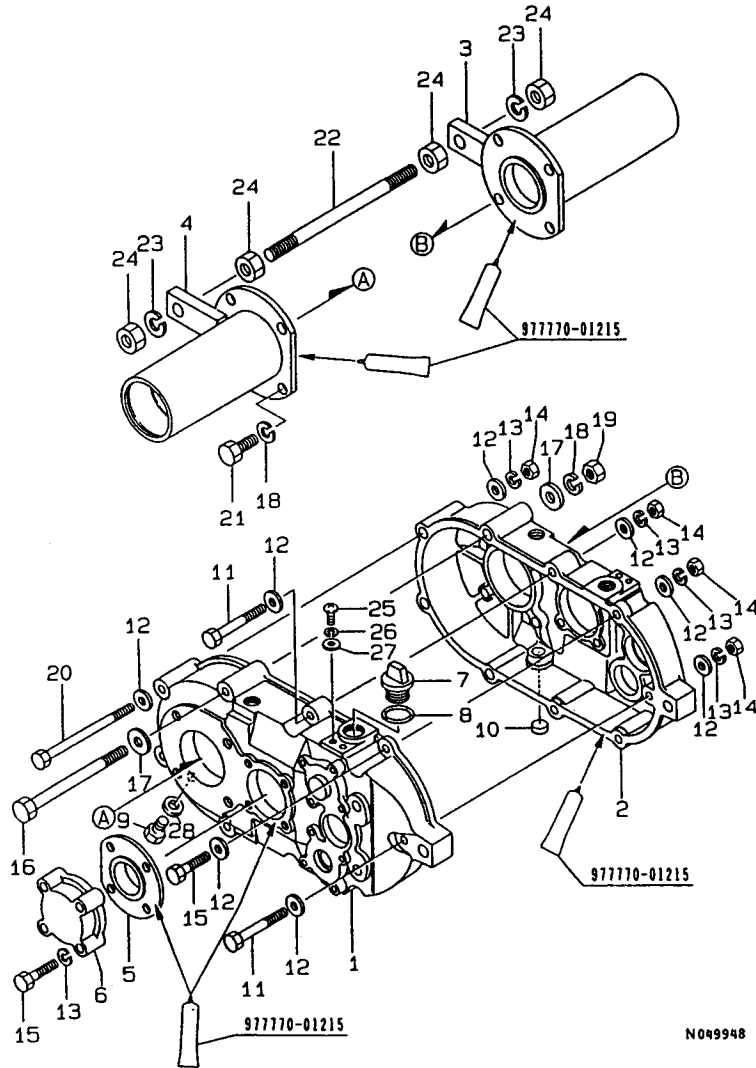
REF. NO.	LEV. 0	PART NO.	DESCRIPTION	-----Q'TY-----						I P/U A R
				(A)	(B)	(C)	(D)	(E)	(F)	
1	.	1N1070-93050	TAPE, REFLECTIVE	4						4
2	.	1N3507-93050	DECAL, HYD. CONTROL	1						
3	.	1N3507-93060	DECAL, HYD. CONTROL	1						
4	.	1N1362-93070	LABEL, PQ-2	1						
5	.	1N1362-93120	LABEL "PQ7"	1						
6	.	1N1362-93140	LABEL, PQ-9	1						
7	.	1N3507-93090	DECAL, HYD. CONTROL	1						1
8	.	1N1362-93200	LABEL, PQ-15	1						1
9	.	1N1362-93190	LABEL, PQ-14	1						
10	.	1N1296-93030	PLATE, CHANGE	1						1
11	.	1N1362-93080	LABEL, PQ-3	1						1
12	.	1N1362-93220	LABEL, PQ-17	1						
13	.	1N1277-93020	STICKER A, SIDE	2						1
14	.	1N1277-93030	STICKER B, SIDE	4						1
15	.	1N1367-93010	NAMER "MCG111F", MODEL	1						1

REMARKS  
 (1) (1) GROUP NO.15(EXPORT) EXCLUSIVE  
 PARTS FOR MCG111F-PQR

N112533



1. TRANSMISSION CASE



N049948

-----+  
 | 1E03 |  
 | (1E02) |  
 +-----+  
 MPC-2662

1. TRANSMISSION CASE

96.02.07

(A)=FT50-7F (D)=  
 (B)= (E)=  
 (C)= (F)=

REF. NO.	LEV. 0	PART NO.	DESCRIPTION	-----Q'TY-----						I	P	U	A	R
				(A)	(B)	(C)	(D)	(E)	(F)					
1	.	1N1340-24000	CASE L, TRANSMISSION	1										1
2	.	1N1360-24020	CASE R, TRANSMISSION	1										1
3	.	1N1366-24000	HOLDER R, AXLE	1										1
4	.	1N1366-24010	HOLDER L, AXLE	1										1
5	.	1N1360-25010	METAL, CLUTCH PAWL	2										1
6	.	1N1360-24030	COVER, BEARING	2										1
7	.	1N1340-24100	PLUG, OIL	1										1
8	.	24311-000180	O-RING 1A P-18.0	1										10
9	.	1N1361-24010	PLUG, OIL DRAIN	1										1
10	.	1N1430-24050	PLUG, BLIND	2										1
11	.	26117-080602	BOLT M 8X 60 PLATED	3										10
12	.	22137-080000	WASHER 8, POLISHED	14										10
13	.	22217-080000	SPRING WASHER 8	15										10
14	.	26717-080002	NUT 8	7										10
15	.	26117-080352	BOLT M 8X 35 PLATED	10										10
16	.	26117-101202	BOLT M10X120 PLATED	2										2
17	.	22137-100000	WASHER 10, POLISHED	4										10
18	.	22217-100000	SPRING WASHER 10	10										10
19	.	26717-100002	NUT M10	2										10
20	.	26117-081102	BOLT M 8X110 PLATED	2										10
21	.	26117-100254	BOLT M10X25 PLATED	8										5
22	.	1N1150-24170	STUD 12X180	1										1
23	.	22217-120000	WASHER 12, SPRING	2										10
24	.	26717-120002	NUT M12	4										10
25	.	26557-060162	SCREW M 6X 16	4										10
26	.	22217-060000	SPRING WASHER 6	4										10
27	.	22137-060000	WASHER 6, POLISHED	4										10
28	.	1N1361-24020	WASHER 14, SEAL	1										1

----- REMARKS -----  
 \* 7N1366-20000 25530(5) 1

N049948

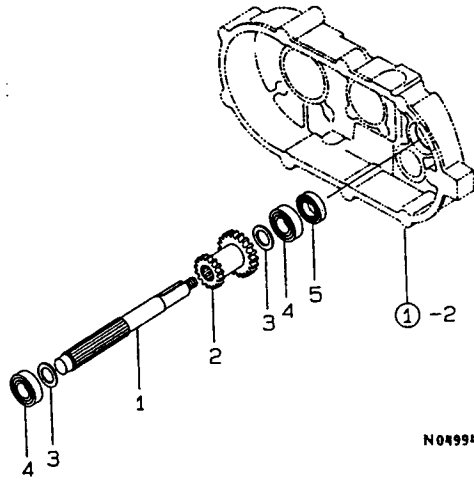
2. MAIN SHAFT

-----+  
 | 1E04 |  
 | (1E02) |  
 |-----+  
 MPC-2662

2. MAIN SHAFT

96.02.07

(A)=FT50-7F (D)=  
 (B)= (E)=  
 (C)= (F)=

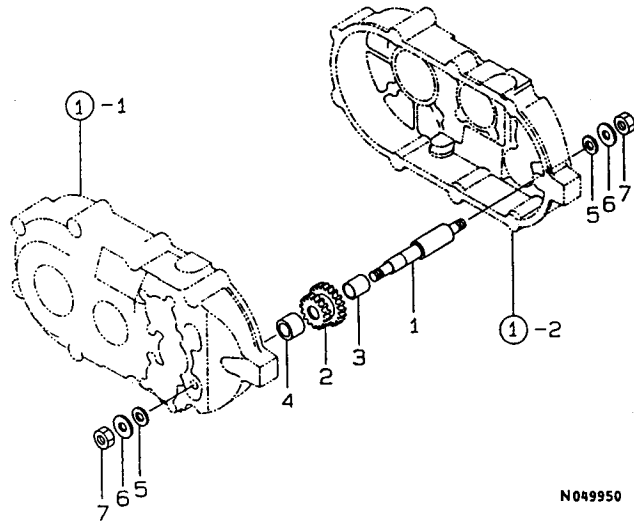


NO49949

REF. NO.	LEV. 0	PART NO.	DESCRIPTION	-----Q'TY-----						I P/U A R
				(A)	(B)	(C)	(D)	(E)	(F)	
1	.	1N1340-25100	SHAFT, INPUT	1						1
2	.	1N1340-25131	GEAR, INPUT SHAFT	1						1
3	.	1N1340-25120	COLLAR, INPUT SHAFT	2						1
4	.	24101-060034	BALL BEARING	2						1
5	.	1N1340-25110	SEAL TC17327, OIL	1						1

NO49949

3. TRANSMISSION SHAFT B



N049950

↑-----↑  
 | 1E05 |  
 | (1E02) |  
 ↓-----↓  
 NPC-2662

3. TRANSMISSION SHAFT B

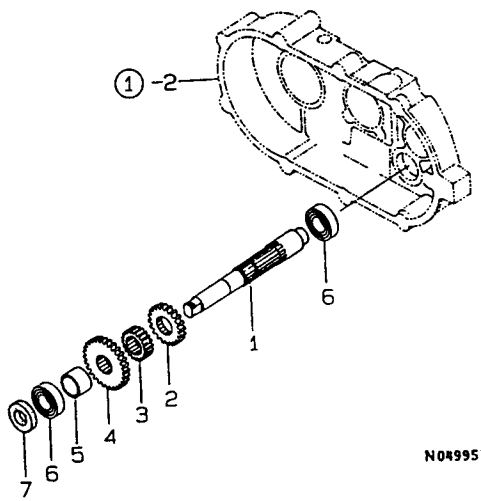
96.02.07

(A)=FT50-7F (D)=  
 (B)= (E)=  
 (C)= (F)=

REF. NO.	LEV. 0	PART NO.	DESCRIPTION	-----Q'TY-----						I P/U A R
				(A)	(B)	(C)	(D)	(E)	(F)	
1	.	1N1340-25000	SHAFT, BACK	1						1
2	.	1N1340-25011	GEAR, BACK	1						1
3	.	1N1340-25020	METAL, BEARING	1						1
4	.	1N1340-25030	COLLAR, BACK SHAFT	1						1
5	.	1N1430-26030	WASHER, SEAL	2						1
6	.	22137-100000	WASHER 10, POLISHED	2						10
7	.	26717-100002	NUT M10	2						10

N049950

4. TRANSMISSION SHAFT C



N049951

↑-----↑  
 | 1E06 |  
 | (1E02) |  
 ↑-----↑  
 NPC-2662

4. TRANSMISSION SHAFT C

96.02.07

(A)=FT50-7F (D)=  
 (B)= (E)=  
 (C)= (F)=

REF. NO.	LEV. 0	PART NO.	DESCRIPTION	-----Q'TY-----						I P/U A R
				(A)	(B)	(C)	(D)	(E)	(F)	
1	.	1N1361-25000	SHAFT, BRAKE	1						1
2	.	1N1340-25150	GEAR, TOP	1						1
3	.	1N1340-25160	GEAR, 2ND SHAFT	1						1
4	.	1N1340-25171	GEAR, LOW	1						1
5	.	1N1340-25180	COLLAR, 2ND SHAFT	1						1
6	.	24101-060034	BALL BEARING	2						1
7	.	1N1340-25110	SEAL TC17327, OIL	1						1



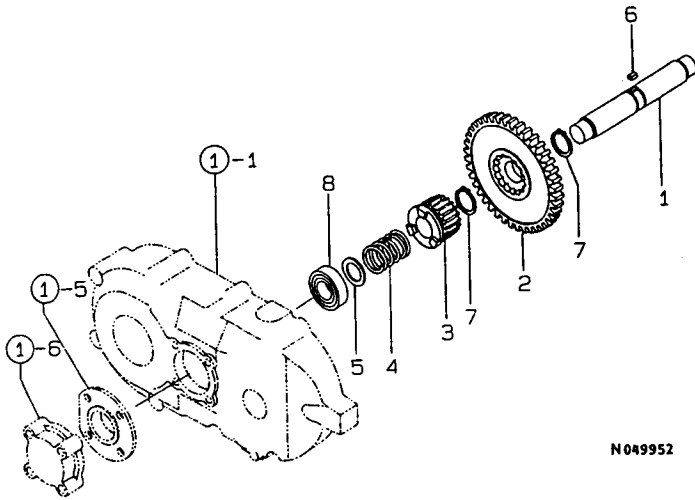
5. SIDE CLUTCH SHAFT

+-----+  
 | 1E07 |  
 | (1E02) |  
 +-----+  
 NPC-2662

5. SIDE CLUTCH SHAFT

96.02.07

(A)=FT50-7F (D)=  
 (B)= (E)=  
 (C)= (F)=



N049952

REF. NO.	LEV. 0	PART NO.	DESCRIPTION	-----Q'TY-----						I	P	U	A	R
				(A)	(B)	(C)	(D)	(E)	(F)					
1	.	1N1360-25031	SHAFT, CLUTCH	1										1
2	.	1N1350-25041	GEAR 36T, CLUTCH	1										1
3	.	1N1360-25022	GEAR, SIDE CLUTCH	2										1
4	.	1N1360-25001	SPRING, SIDE CLUTCH	2										1
5	.	1N1350-25010	COLLAR, CLUTCH SHAFT	2										1
6	.	1N1350-25050	KEY 5X5X9, SQ. ENDED	1										1
7	.	22242-000220	CIRCLIP 22	2										10
8	.	24101-060044	BALL BEARING 6004	2										1

N049952

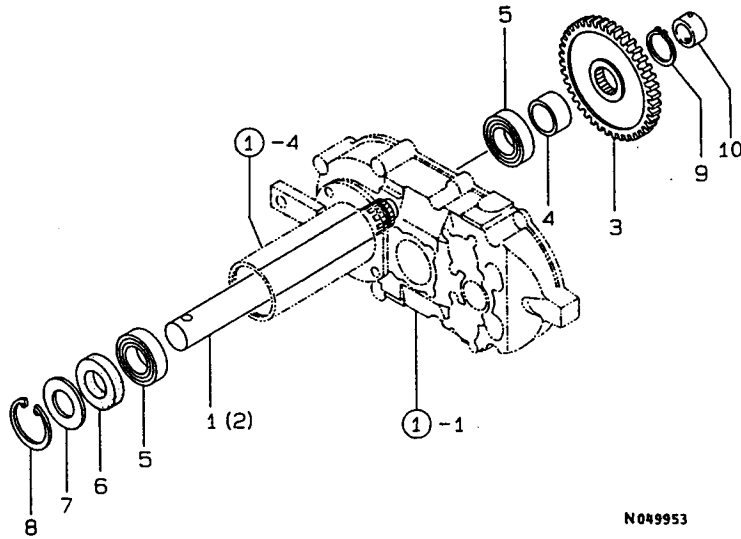
6. AXLE

+-----+  
 | 1E08 |  
 | (1E02) |  
 +-----+  
 NPC-2662

6. AXLE

96.02.07

(A)=FT50-7F (D)=  
 (B)= (E)=  
 (C)= (F)=



N049953

REF. NO.	LEV. 0	PART NO.	DESCRIPTION	-----Q'TY-----						I P/U A R
				(A)	(B)	(C)	(D)	(E)	(F)	
1	-	1N1366-25011	AXLE L	1						1
2	-	1N1366-25001	AXLE R	1						1
3	-	1N1350-25111	GEAR, AXLE	2						1
4	-	1N1350-25120	COLLAR, AXLE	2						1
5	-	24101-060064	BALL BEARING	4						1
6	-	24421-305512	SEAL TC30 55 12, OIL	2						1
7	-	1N1340-25250	COVER, OIL SEAL	2						1
8	-	22252-000550	CIRCLIP 55	2						10
9	-	22242-000300	CIRCLIP 30	2						10
10	-	1N1361-25040	COLLAR A, AXLE	1						1

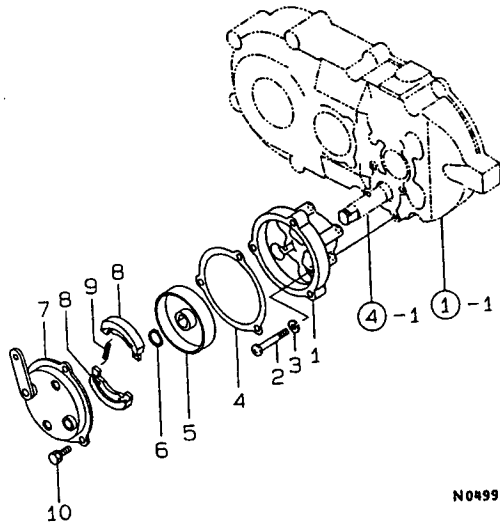
7. BRAKE

↑-----↑  
 | 1E09 |  
 | (1E02) |  
 ↓-----↓  
 NPC-2662

7. BRAKE

96.02.07

(A)=FT50-7F (D)=  
 (B)= (E)=  
 (C)= (F)=

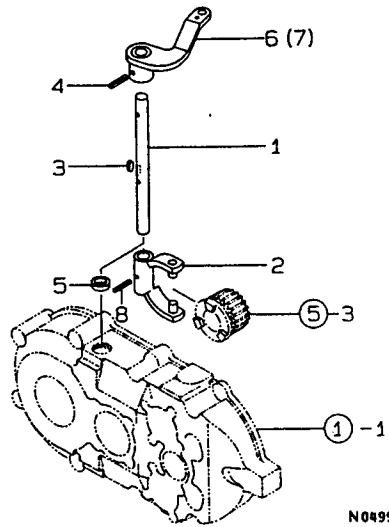


N049954

REF. NO.	LEV. 0	PART NO.	DESCRIPTION	-----Q'TY-----						I P/U A R
				(A)	(B)	(C)	(D)	(E)	(F)	
1	.	1N1361-25010	HOLDER, BRAKE	1						1
2	.	26557-060402	SCREW M 6X 40	4						10
3	.	22217-060000	SPRING WASHER 6	4						10
4	.	1N1291-25230	PACKING, BRAKE PLATE	1						1
5	.	1N1291-25220	DRUM, BRAKE	1						1
6	.	22242-000140	CIRCLIP 14	1						10
7	.	1N1291-25240	PLATE COMP., BRAKE	1						1
8	.	1N1291-25250	SHOE, BRAKE	2						1
9	.	1N1291-25260	SPRING, BRAKE SHOE	2						1
10	.	26016-060124	BOLT 6X12 W/L.W.	3						30

N049954

8. SIDE CLUTCH



N049955

↑-----↑  
 | 1E10 |  
 | (1E02) |  
 ↓-----↓  
 NPC-2662

8. SIDE CLUTCH

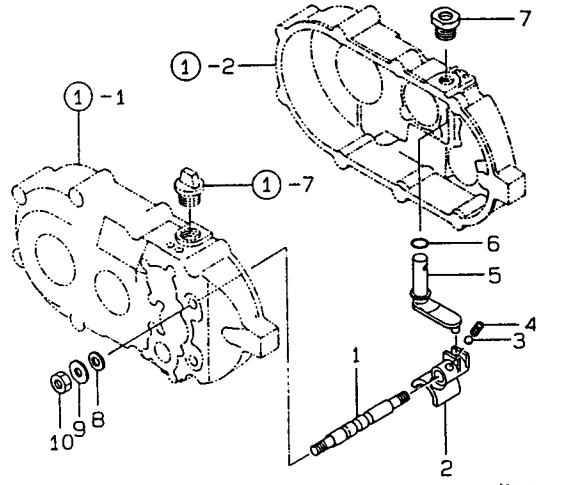
96.02.07

(A)=FT50-7F (D)=  
 (B)= (E)=  
 (C)= (F)=

REF. NO.	LEV. 0	PART NO.	DESCRIPTION	-----Q'TY-----						I P/U A R
				(A)	(B)	(C)	(D)	(E)	(F)	
1	.	1N1366-25040	ROD,CLUTCH	2						1
2	.	1N1350-25070	SHIFTER S,GEAR	2						1
3	.	1N1350-25080	KEY 4X4X10,RD.ENDED	2						1
4	.	22351-050025	SPRING PIN 5X25	2						10
5	.	1N1350-25090	O-RING,CLUTCH ROD	2						1
6	.	1N1366-25030	LEVER L,CLUTCH	1						1
7	.	1N1366-25020	LEVER R,CLUTCH	1						1
8	.	1N1350-24040	PIN 4X22,SPIROLL	2						1

N049955

9. MAIN CHANGE



N049956

↑-----↑  
 ↑ 1E11 ↑  
 ↑ (1E02) ↑  
 ↑-----↑  
 NPC-2662

9. MAIN CHANGE

96.02.07

(A)=FT50-7F (D)=  
 (B)= (E)=  
 (C)= (F)=

REF. NO.	LEV. 0	PART NO.	DESCRIPTION	-----Q'TY-----						I P/U A R
				(A)	(B)	(C)	(D)	(E)	(F)	
1	.	1N1361-26001	ROD, SHIFTER	1						1
2	.	1N1340-25050	SHIFTER A, GEAR	1						1
3	.	1N1150-25010	BALL 8, STEEL	1						1
4	.	1N1150-25020	SPRING	1						1
5	.	1N1340-25040	LEVER, SHIFT	1						1
6	.	24311-000143	O-RING 1A P 14.0	1						1
7	.	1N1340-25080	GUIDE, SHIFT LEVER	1						1
8	.	1N1430-26030	WASHER, SEAL	2						1
9	.	22137-100000	WASHER 10, POLISHED	2						10
10	.	26717-100002	NUT M10	2						10

N049956

PART NO.	DESCRIPTION	CATALOG NO.	GRP. NO.	REF. NO.	LOC. NO.	PART NO.	DESCRIPTION	CATALOG NO.	GRP. NO.	REF. NO.	LOC. NO.
1A1470-40900	SWITCH,STOP	NPC-2680	6	20	1C12	1N1210-42140	RIVET	NPC-2680	10	6	1C16
			18	16	1D02	1N1210-53010	SPRING 18X105,TENS'N	NPC-2680	17	25	1C07
1A2100-86500	DANGER,FIRE PROHIBIT	NPC-2680	16	12	1D12	1N1210-53030	SPRING 21.5X78,TENS.	NPC-2680	1	14	1C03
1C6700-85650	CAUTION,ENGINE STOP	NPC-2680	16	10	1D12				7	10	1C13
1C6700-85670	CAUTION,COVER	NPC-2680	16	11	1D12				10	4	1C16
1E5120-86600	WARNING,EXHAUST GAS	NPC-2680	16	14	1D12				19	10	1D03
1E5120-86720	CAUTION,MUFFLER	NPC-2680	16	13	1D12	1N1210-65090	HANDLE 90,SET	NPC-2680	11	7	1D07
1N1070-91010	FUNNEL	NPC-2680	13	1	1D10	1N1227-53010	BELLOWS,SQ.OIL PLUG	NPC-2680	11	23	1D07
1N1070-91020	HOSE	NPC-2680	13	2	1D10	1N1240-35030	BASE,STAND	NPC-2680	4	8	1C09
1N1070-91030	WRENCH 24,OFFSET	NPC-2680	13	3	1D10				5	8	1C10
1N1070-91090	BAG,TOOL	NPC-2680	13	5	1D10	1N1240-42050	LINK,CRESCENT	NPC-2680	7	7	1C13
1N1070-93050	TAPE,REFLECTIVE	NPC-2680	12	1	1D09				19	7	1D03
			15	1	1D11	1N1270-22080	GUIDE 80,BELT	NPC-2680	2	2	1C04
1N1090-21010	WASHER 9X35X3.2	NPC-2680	2	10	1C04					34	1C04
1N1100-41000	CIRCLIP 24.8,CHANGE	NPC-2680	9	17	1C15	1N1272-93070	PLATE,SUB-CHANGE	NPC-2680	12	2	1D09
			21	14	1D05	1N1277-42270	HOSE,VINYL	NPC-2680	7	18	1C13
1N1101-36041	SEAL 204212,OIL	NPC-2680	4	7	1C09	1N1277-42300	LEVER B,CLUTCH	NPC-2680	6	13	1C12
1N1101-44000	GRIP,SIDE CLUTCH	NPC-2680	11	16	1D07				18	13	1D02
1N1101-44010	GRIP 10,CLUTCH	NPC-2680	10	3	1C16	1N1277-42320	LEVER B,CLUTCH COMB.	NPC-2680	6	12	1C12
1N1101-44020	GRIP 10,BRAKE	NPC-2680	6	17	1C12				18	12	1D02
			9	2	1C15	1N1277-51010	WIRE,CHOKE	NPC-2680	6	10	1C12
			17	22	1C07				18	10	1D02
			21	2	1D05	1N1277-93020	STICKER A,SIDE	NPC-2680	12	8	1D09
1N1101-44030	GRIP 10,BRAKE RED	NPC-2680	7	2	1C13				15	13	1D11
			19	2	1D03	1N1277-93030	STICKER B,SIDE	NPC-2680	12	9	1D09
1N1101-44040	RUBBER,STOPPER	NPC-2680	3	20	1C06				15	14	1D11
			6	19	1C12	1N1280-41220	COLLAR	NPC-2680	7	22	1C13
			17	20	1C07	1N1291-22020	GUARD 40,BELT	NPC-2680	2	27	1C04
			18	17	1D02					36	1C04
1N1110-42001	ROD A,CLUTCH BRAKE	NPC-2680	1	15	1C03	1N1291-25220	DRUM,BRAKE	NPC-2662	7	5	1E09
			7	11	1C13	1N1291-25230	PACKING,BRAKE PLATE	NPC-2662	7	4	1E09
			8	4	1C14	1N1291-25240	PLATE COMP.,BRAKE	NPC-2662	7	7	1E09
			20	12	1D04	1N1291-25250	SHOE,BRAKE	NPC-2662	7	8	1E09
1N1110-93020	LABEL,SIDE CLUTCH	NPC-2680	12	7	1D09	1N1291-25260	SPRING,BRAKE SHOE	NPC-2662	7	9	1E09
1N1121-44000	GROMMET 44	NPC-2680	3	19	1C06	1N1291-51030	SWITCH,SAFETY	NPC-2680	6	24	1C12
			17	19	1C07	1N1291-51031	SWITCH,SAFETY	NPC-2680	6	24-1	1C12
1N1150-24170	STUD 12X180	NPC-2662	1	22	1E03	1N1291-58080	BOLT 6X16 W/P&SW.	NPC-2680	3	9	1C06
1N1150-25010	BALL 8,STEEL	NPC-2662	9	3	1E11				6	6	1C12
1N1150-25020	SPRING	NPC-2662	9	4	1E11				17	9	1C07
1N1151-53000	SPRING 12.5X54,TENS.	NPC-2680	6	18	1C12				18	6	1D02
			19	17	1D03	1N1293-64060	LEVER A,DMMP	NPC-2680	11	15	1D07
1N1151-53010	SPRING 16.5X76,TENS.	NPC-2680	8	16	1C14					32	1D07
			20	17	1D04	1N1296-35000	PIN,SPROCKET	NPC-2680	5	18	1C10
1N1151-53020	SPRING 10.5X25,COMPR	NPC-2680	11	6	1D07	1N1296-37000	CRAWLER 180X60X37,RB	NPC-2680	4	13	1C09
				28	1D07	1N1296-93030	PLATE,CHANGE	NPC-2680	12	3	1D09
1N1185-22060	ROLLER S,TENSION	NPC-2680	1	10	1C03				15	10	1D11
1N1190-45000	SPRING 11X72.5,TENS.	NPC-2680	1	18	1C03	1N1296-93050	PLATE 400,LOADAGE	NPC-2680	12	4	1D09
			7	17	1C13	1N1313-93160	WARNING,IN-STARTING	NPC-2680	16	5	1D12
			8	12	1C14	1N1340-24000	CASE L,TRANSMISSION	NPC-2662	1	1	1E03
			10	9	1C16	1N1340-24100	PLUG,OIL	NPC-2662	1	7	1E03
			19	18	1D03	1N1340-25000	SHAFT,BACK	NPC-2662	3	1	1E05
			20	13	1D04	1N1340-25011	GEAR,BACK	NPC-2662	3	2	1E05
1N1210-21010	COLLAR,COUNTER SHAFT	NPC-2680	2	13	1C04	1N1340-25020	METAL,BEARING	NPC-2662	3	3	1E05
1N1210-35100	U-BOLT	NPC-2680	5	13	1C10	1N1340-25030	COLLAR,BACK SHAFT	NPC-2662	3	4	1E05

PART NO.	DESCRIPTION	CATALOG NO.	GRP. NO.	REF. NO.	LOC. NO.	I	PART NO.	DESCRIPTION	CATALOG NO.	GRP. NO.	REF. NO.	LOC. NO.
1N1340-25050	SHIFTER A,GEAR	NPC-2662	9	2	1E11	I	1N1366-21030	METAL,COUNTER SHAFT	NPC-2680	2	16	1C04
1N1340-25060	LEVER,SHIFT	NPC-2662	9	5	1E11	I	1N1366-21060	SHAFT	NPC-2680	2	9	1C04
1N1340-25080	GUIDE,SHIFT LEVER	NPC-2662	9	7	1E11	I	1N1366-21080	V-PULLEY,ENGINE	NPC-2680	2	1	1C04
1N1340-25100	SHAFT,INPUT	NPC-2662	2	1	1E04	I	1N1366-22000	GUARD,BELT	NPC-2680	2	20	1C04
1N1340-25110	SEAL TC17327,OIL	NPC-2662	2	5	1E04	I	1N1366-22010	ARM A,TENSION	NPC-2680	1	1	1C03
			4	7	1E06	I	1N1366-22020	ARM B,TENSION	NPC-2680	1	2	1C03
1N1340-25120	COLLAR,INPUT SHAFT	NPC-2662	2	3	1E04	I	1N1366-22050	ARM D,TENSION	NPC-2680	1	8	1C03
1N1340-25131	GEAR,INPUT SHAFT	NPC-2662	2	2	1E04	I	1N1366-24000	HOLDER R,AXLE	NPC-2662	1	3	1E03
1N1340-25150	GEAR,TOP	NPC-2662	4	2	1E06	I	1N1366-24010	HOLDER L,AXLE	NPC-2662	1	4	1E03
1N1340-25160	GEAR,2ND SHAFT	NPC-2662	4	3	1E06	I	1N1366-25001	AXLE R	NPC-2662	6	2	1E08
1N1340-25171	GEAR,LOW	NPC-2662	4	4	1E06	I	1N1366-25011	AXLE L	NPC-2662	6	1	1E08
1N1340-25180	COLLAR,2ND SHAFT	NPC-2662	4	5	1E06	I	1N1366-25020	LEVER R,CLUTCH	NPC-2662	8	7	1E10
1N1340-25250	COVER,OIL SEAL	NPC-2662	6	7	1E08	I	1N1366-25030	LEVER L,CLUTCH	NPC-2662	8	6	1E10
1N1350-24040	PIN 4X22,SPIROLL	NPC-2662	8	8	1E10	I	1N1366-25040	ROD,CLUTCH	NPC-2662	8	1	1E10
1N1350-25010	COLLAR,CLUTCH SHAFT	NPC-2662	5	5	1E07	I	1N1366-31001	FRAME	NPC-2680	3	1	1C06
1N1350-25041	GEAR 36T, CLUTCH	NPC-2662	5	2	1E07	I	1N1366-31002	FRAME	NPC-2680	3	1-1	1C06
1N1350-25050	KEY 5X5X9,SQ.ENDED	NPC-2662	5	6	1E07	I	1N1366-35000	SPROKET	NPC-2680	5	16	1C10
1N1350-25070	SHIFTER S,GEAR	NPC-2662	8	2	1E10	I	1N1366-37000	BRACKET A,FRNT.IDLER	NPC-2680	4	14	1C09
1N1350-25080	KEY 4X4X10,RD.ENDED	NPC-2662	8	3	1E10	I	1N1366-41000	HEAD,CHANGE	NPC-2680	9	15	1C15
1N1350-25090	O-RING,CLUTCH ROD	NPC-2662	8	5	1E10	I	1N1366-41010	ROD,CHANGE	NPC-2680	9	14	1C15
1N1350-25111	GEAR,AXLE	NPC-2662	6	3	1E08	I	1N1366-41020	LINK,CHANGE BRAKE	NPC-2680	8	8	1C14
1N1350-25120	COLLAR,AXLE	NPC-2662	6	4	1E08	I	1N1366-41060	ROD,CHANGE	NPC-2680	9	12	1C15
1N1360-22090	SCREW 8X94,ADJUST	NPC-2680	9	8	1C15	I	1N1366-42160	SHAFT A,FULCRUM	NPC-2680	8	9	1C14
			19	11	1D03	I	1N1366-42170	SHAFT B,FULCRUM	NPC-2680	7	15	1C13
			20	4	1D04	I				19	15	1D03
			21	3	1D05	I	1N1366-42180	ROD A,BRAKE	NPC-2680	8	18	1C14
				10	1D05	I				20	20	1D04
1N1360-22130	LINK,CRESCENT	NPC-2680	8	1	1C14	I	1N1366-42200	LINK A,BRAKE	NPC-2680	8	13	1C14
			20	1	1D04	I	1N1366-42250	ROD C,BRAKE	NPC-2680	8	11	1C14
1N1360-22141	ROD,CLUTCH	NPC-2680	8	6	1C14	I	1N1366-47001	HANDLE A	NPC-2680	6	1	1C12
1N1360-24020	CASE R,TRANSMISSION	NPC-2662	1	2	1E03	I	1N1366-47001-1	HANDLE A	NPC-2680	6	1-1	1C12
1N1360-24030	COVER,BEARING	NPC-2662	1	6	1E03	I	1N1366-47040	STAY 10,HANDLE	NPC-2680	6	4	1C12
1N1360-25001	SPRING,SIDE CLUTCH	NPC-2662	5	4	1E07	I				18	4	1D02
1N1360-25010	METAL,CLUTCH PAWL	NPC-2662	1	5	1E03	I	1N1366-51000	WIRE,CONTROL	NPC-2680	10	5	1C16
1N1360-25022	GEAR,SIDE CLUTCH	NPC-2662	5	3	1E07	I	1N1366-53000	SPRING 12.5X34.5,TNS	NPC-2680	9	7	1C15
1N1360-25031	SHAFT,CLUTCH	NPC-2662	5	1	1E07	I	1N1366-54000	STEP A	NPC-2680	3	2	1C06
1N1361-24010	PLUG,OIL DRAIN	NPC-2662	1	9	1E03	I	1N1366-54051	STEP R	NPC-2680	3	3	1C06
1N1361-24020	WASHER 14,SEAL	NPC-2662	1	28	1E03	I	1N1366-54060	STEP L	NPC-2680	3	4	1C06
1N1361-25000	SHAFT,BRAKE	NPC-2662	4	1	1E06	I	1N1366-58020	COVER A,PULLEY	NPC-2680	3	12	1C06
1N1361-25010	HOLDER,BRAKE	NPC-2662	7	1	1E09	I	1N1366-58090	FRAME,UNDER	NPC-2680	3	15	1C06
1N1361-25040	COLLAR A,AXLE	NPC-2662	6	10	1E08	I				17	15	1C07
1N1361-26001	ROD,SHIFTER	NPC-2662	9	1	1E11	I	1N1366-58100	GUARD,PULLEY	NPC-2680	3	13	1C06
1N1361-35011	SHAFT	NPC-2680	5	4	1C10	I				17	13	1C07
1N1361-36000	ROLLER,LOWER TRANK	NPC-2680	5	3	1C10	I	1N1366-58110	GUARD A,TRANSMISSION	NPC-2680	3	14	1C06
1N1362-93070	LABEL,PQ-2	NPC-2680	15	4	1D11	I				17	14	1C07
1N1362-93080	LABEL,PQ-3	NPC-2680	15	11	1D11	I	1N1366-64210	LEVER A,LOCK	NPC-2680	6	16	1C12
1N1362-93120	LABEL*PQ7*	NPC-2680	15	5	1D11	I	1N1366-64250	PIN,FULCRUM	NPC-2680	11	21	1D07
1N1362-93140	LABEL,PQ-9	NPC-2680	15	6	1D11	I	1N1367-16000	BASE,ENGINE	NPC-2680	2	28	1C04
1N1362-93190	LABEL,PQ-14	NPC-2680	15	9	1D11	I	1N1367-16001	BASE,ENGINE	NPC-2680	2	28-1	1C04
1N1362-93200	LABEL,PQ-15	NPC-2680	15	8	1D11	I	1N1367-16010	BOLT,ENGINE MOUNTING	NPC-2680	2	29	1C04
1N1362-93220	LABEL,PQ-17	NPC-2680	15	12	1D11	I	1N1367-22000		NPC-2680	2	32	1C04
1N1364-41000	LEVER,CHANGE	NPC-2680	9	1	1C15	I	1N1367-31030	FRAME,BODY	NPC-2680	17	1	1C07
1N1366-21010	V-PULLEY	NPC-2680	2	8	1C04	I	1N1367-41000	RING,CHANGE	NPC-2680	9	3	1C15
1N1366-21020	V-PULLEY,TRANSMIS'N	NPC-2680	2	24	1C04	I	1N1367-41030	HEAD A,CHANGE	NPC-2680	21	12	1D05

PART NO.	DESCRIPTION	CATALOG NO.	GRP. NO.	REF. NO.	LOC. NO.	PART NO.	DESCRIPTION	CATALOG NO.	GRP. NO.	REF. NO.	LOC. NO.
1N1367-41050	LEVER A,CHANGE	NPC-2680	21	1	1D05	1N1367-66000	PLATE A,FRONT	NPC-2680	11	25	1D07
1N1367-41060		NPC-2680	21	7	1D05	1N1367-66020	PLATE A,BACK	NPC-2680	11	26	1D07
1N1367-41070		NPC-2680	21	11	1D05	1N1367-93010	NAMER "MCG11F",MODEL	NPC-2680	12	10	1D09
1N1367-41090		NPC-2680	21	11-1	1D05			NPC-2680	15	15	1D11
1N1367-42000	LINK,CLUTCH BRAKE	NPC-2680	7	3	1C13	1N1367-93060		NPC-2680	12	4-1	1D09
1N1367-42020	LEVER,CLUTCH	NPC-2680	7	1	1C13	1N1367-95000	INSTRUCTION BOOK	NPC-2680	13	6	1D10
1N1367-42040	LEVER,SAFETY	NPC-2680	7	16	1C13	1N1383-93190	WARNING,STEEP SLOPE	NPC-2680	16	4	1D12
1N1367-42050	STOPPER,CLUTCH	NPC-2680	6	22	1C12	1N1430-22070	ROLLER,TENSION	NPC-2680	1	3	1C03
			18	19	1D02	1N1430-24050	PLUG,BLIND	NPC-2662	1	10	1E03
1N1367-42080	HOSE,VINYL	NPC-2680	6	21	1C12	1N1430-26030	WASHER,SEAL	NPC-2662	3	5	1E05
			18	18	1D02				9	8	1E11
1N1367-42090	LINK A,CLUTCH BRAKE	NPC-2680	7	20	1C13	1N1431-52000	WIRE 650,STOP LEAD	NPC-2680	6	9	1C12
1N1367-42120	BRACKET A,DEADMN.LVR	NPC-2680	14	2	1D01	1N1480-93080	NAMER D,HANDLING	NPC-2680	12	5	1D09
1N1367-42140	LEVER A,CLUTCH	NPC-2680	7	19	1C13	1N1540-35080	IDLER,FRONT	NPC-2680	4	3	1C09
1N1367-42160	LEVER	NPC-2680	14	9	1D01	1N1540-35091	SHAFT, IDLER	NPC-2680	4	4	1C09
1N1367-42170	HANDLE A1	NPC-2680	6	25	1C12	1N1700-41020	ROD A,CHANGE	NPC-2680	7	13	1C13
1N1367-42180	STOPPER,CLUTCH	NPC-2680	6	27	1C12				20	6	1D04
1N1367-42200		NPC-2680	19	3	1D03	1N1723-31360	LEVER,DEADMAN	NPC-2680	14	1	1D01
1N1367-42210	LEVER A,CLUTCH	NPC-2680	19	1	1D03	1N3500-44000	GRIP,RED	NPC-2680	7	21	1C13
1N1367-42230		NPC-2680	20	9	1D04	1N3500-51010	WIRE,THROTTLE	NPC-2680	6	15	1C12
1N1367-42240	LINK,CHANGE	NPC-2680	21	9	1D05				18	15	1D02
1N1367-42250	LINK,BRAKE	NPC-2680	20	8	1D04	1N3500-93030	LABEL,CLUTCH	NPC-2680	12	6	1D09
1N1367-42270	LINK,BRAKE	NPC-2680	20	14	1D04	1N3501-35030	U-BOLT	NPC-2680	5	13-1	1C10
1N1367-42310	ROD,BRAKE	NPC-2680	20	11	1D04	1N3505-93150	LABEL, SUB CHANGE	NPC-2680	12	2-1	1D09
1N1367-42330	LEVER A,SAFETY	NPC-2680	19	16	1D03	1N3506-37000	CRAWLER 180X60X37,RB	NPC-2680	4	13-1	1C09
1N1367-42350	ROD	NPC-2680	19	13	1D03	1N3507-93050	DECAL, HYD. CONTROL	NPC-2680	15	2	1D11
1N1367-44000	LEVER R,SIDE CLUTCH	NPC-2680	10	1	1C16	1N3507-93060	DECAL, HYD. CONTROL	NPC-2680	15	3	1D11
				13	1C16	1N3507-93090	DECAL, HYD. CONTROL	NPC-2680	15	7	1D11
1N1367-44010	LEVER L,SIDE CLUTCH	NPC-2680	10	2	1C16	1N3540-64120	PIN, LOCK	NPC-2680	11	27	1D07
				14	1C16	1N3544-93060	LABEL,TRV.CLTC.BRAKE	NPC-2680	12	6-1	1D09
1N1367-44040		NPC-2680	10	10	1C16	1N3544-93070	LABEL,SIDE CLUTCH	NPC-2680	12	7-1	1D09
1N1367-44050		NPC-2680	10	11	1C16	1N3544-93080	LABEL, MAIN CHANGE	NPC-2680	12	3-1	1D09
1N1367-47000		NPC-2680	18	1	1D02	1N3544-93130	CAUTION,HANDLING,ETC	NPC-2680	16	1	1D12
1N1367-51000	BRACKET,SWITCH	NPC-2680	6	23	1C12	1N3544-93140	DANGER,IN-BACKING	NPC-2680	16	2	1D12
1N1367-52000	LEAD WIRE (B)	NPC-2680	6	9-1	1C12	1N3544-93160	DANGER,FALL PREVENT.	NPC-2680	16	3	1D12
			18	9	1D02	1N3544-93170	DANGER,SLOPE/SHOULDR	NPC-2680	16	6	1D12
1N1367-54000	STEP(B)	NPC-2680	17	2	1C07	1N3544-93180	WARNING,IN-LOADING	NPC-2680	16	7	1D12
1N1367-54010		NPC-2680	17	3	1C07	1N3544-93200	WARNING,DRESS/REMDL.	NPC-2680	16	8	1D12
1N1367-54030		NPC-2680	17	4	1C07	1N3544-93210	WARNING,M/C TRANSPRT	NPC-2680	16	9	1D12
1N1367-58000	PANEL A,CONTROL	NPC-2680	6	5	1C12	104200-59170	GASKET 12	NPC-2633	1	8	1B03
1N1367-58020	COVER A,PULLEY	NPC-2680	3	11	1C06					13	1B03
1N1367-58070	PANEL B,CONTROL	NPC-2680	6	26	1C12	106990-44660	BAND, HOSE	NPC-2633	6	25	1B08
1N1367-58140		NPC-2680	17	12	1C07					31	1B08
1N1367-64000	CARRIER,PLATFORM	NPC-2680	11	1	1D07	114250-14400	ROD, PUSH	NPC-2633	5	12	1B07
1N1367-64001	CARRIER,PLATFORM	NPC-2680	11	1-1	1D07	114250-45310	COLLAR	NPC-2633	6	1	1B08
1N1367-64080	CARRIER B,PLATFORM	NPC-2680	11	30	1D07	114252-13950	BOLT M 6X 8 PLATED	NPC-2633	4	16	1B06
1N1367-64090		NPC-2680	17	21	1C07	114770-61600	SEAL, OIL	NPC-2633	8	34	1B11
1N1367-64110		NPC-2680	11	31	1D07	124060-77680	CLAMP 10	NPC-2633	6	25-1	1B08
1N1367-65000	PIPE A,SLIDE	NPC-2680	11	13	1D07	160110-92610	BAG, TOOL	NPC-2633	3	9	1B05
1N1367-65020	PIPE B,SLIDE	NPC-2680	11	14	1D07	160110-92710	BAR	NPC-2633	3	11	1B05
1N1367-65030	PIPE C,SLIDE	NPC-2680	11	2	1D07	160120-76940	WASHER	NPC-2633	8	9	1B11
1N1367-65040	PIPE D,SLIDE	NPC-2680	11	3	1D07	160120-92700	SPANNER, BOX	NPC-2633	3	10	1B05
1N1367-65050	PLATE R,SIDE	NPC-2680	11	11	1D07	160260-78700	CLAMP, CORD	NPC-2633	6	27	1B08
1N1367-65080	PLATE L,SIDE	NPC-2680	11	10	1D07	160310-14550	WASHER	NPC-2633	5	13	1B07



PART NO.	DESCRIPTION	CATALOG NO.	GRP. NO.	REF. NO.	LOC NO.	PART NO.	DESCRIPTION	CATALOG NO.	GRP. NO.	REF. NO.	LOC NO.	
160321-13770	EXTENSION, MUFFLER	NPC-2633	4	14	1806	160690-12540	BODY, AIR CLEANER	NPC-2633	4	4	1806	
160393-55050	GASKET, TANK CAP	NPC-2633	6	11	1808	160690-12610	CLEANER ASSY, AIR	NPC-2633	4	1	1806	
160490-14200	TAPPET	NPC-2633	5	11	1807	160690-13200	GASKET, MUFFLER	NPC-2633	4	8	1806	
160493-12550	HOLDER, ELEMENT	NPC-2633	4	5	1806	160690-13550	BRACKET, MUFFLER	NPC-2633	4	9	1806	
160520-07271	LABEL, DRAIN	NPC-2633	3	5	1805	160690-13900	COVER, ELBOW	NPC-2633	4	15	1806	
160520-07272	LABEL, DRAIN	NPC-2633	3	5-1	1805	160690-14051	CAMSHAFT ASSY	NPC-2633	5	1	1807	
160520-66291	SPRING	NPC-2633	8	22	1811	160690-14560	SPRING, DECOMP.	NPC-2633	5	8	1807	
160590-21210	GEAR, IDLE	NPC-2633	5	20	1807	160690-14570	SPRING, DECOMP.	NPC-2633	5	8-1	1807	
160590-56530	VALVE, CHOKE	NPC-2633	7	5	1809	160690-21201	GEAR, CRANKSHAFT	NPC-2633	5	19	1807	
160590-56670	NOZZLE, MAIN	NPC-2633	7	19	1809	160690-22011	PISTON W/RINGS	NPC-2633	5	23	1807	
160592-56540	VALVE, THROTTLE	NPC-2633	7	2	1809	160690-22300	PIN, PISTON	NPC-2633	5	29	1807	
160592-56670	BODY, FLOAT CHAMBER	NPC-2633	7	18-1	1809	160690-45011	FAN, COOLING	NPC-2633	9	32	1812	
160594-56590	RING, CHOKE LEVER	NPC-2633	7	16	1809	160690-45200	COVER, CYLINDER	NPC-2633	9	34	1812	
160594-56650	LEVER, CHOKE	NPC-2633	7	14-1	1809	160690-45211	COVER, REAR	NPC-2633	9	35	1812	
160594-56810	SPRING	NPC-2633	7	30-1	1809	160690-55300	COCK ASSY, FUEL	NPC-2633	6	14	1808	
160610-01690	PLUG, DRAIN	NPC-2633	1	7	1803	160690-55310	COCK ASSY, FUEL	NPC-2633	6	15	1808	
				12	1803	160690-55320	LEVER, FUEL COCK	NPC-2633	6	16	1808	
160610-04201	BOLT M 8X 53	NPC-2633	1	21	1803	160690-55330	SHIFT, FUEL COCK	NPC-2633	6	17	1808	
160610-04570	BOLT M 6X 70	NPC-2633	2	1	1804	160690-55460	DAMPER, FUEL TANK	NPC-2633	6	20	1808	
160610-04910	NUT M14	NPC-2633	5	16	1807	160690-56160	SPACER	NPC-2633	7	32	1809	
160610-55100	STRAINER	NPC-2633	6	12	1808	160690-56750	NOZZLE	NPC-2633	7	30B	1809	
160610-55470	PIECE	NPC-2633	6	21	1808	160690-56800	JET, ENRICHMENT	NPC-2633	7	22	1809	
160610-56150	GASKET, CARBURETOR	NPC-2633	4	6	1806	160690-59360	PIPE, FUEL	NPC-2633	6	26	1808	
				7	31	1809	160690-61300	SPINDLE, GOVERNOR	NPC-2633	8	2	1811
160610-56610	GASKET	NPC-2633	7	17	1809	160690-61310	SHAFT, GOV. LEVER	NPC-2633	8	3	1811	
160610-56611	GASKET	NPC-2633	7	21	1809	160690-61450	WASHER	NPC-2633	8	4	1811	
160610-56630	PIN, FLOAT	NPC-2633	7	12	1809	160690-61600	GEAR ASSY, GOV.	NPC-2633	8	5	1811	
160610-56740	JET, PILOT	NPC-2633	7	6	1809	160690-66010	SPRING, GOVERNOR	NPC-2633	8	11	1811	
160610-56900	SCREW	NPC-2633	7	25	1809	160690-66011	SPRING, GOVERNOR	NPC-2633	8	11-1	1811	
160640-56850	SEAL	NPC-2633	7	24	1809	160690-66111	BASE ASSY, CONTROL	NPC-2633	8	18	1811	
160662-07370	LABEL, AIR CLEANER	NPC-2633	3	7	1805	160690-66140	BASE, CONTROL	NPC-2633	8	19	1811	
160664-07360	LABEL, AIR CLEANER	NPC-2633	3	6	1805	160690-66141	BASE, CONTROL	NPC-2633	8	19-1	1811	
160664-07370	LABEL, AIR CLEANER	NPC-2633	3	8	1805	160690-66142	BASE, CONTROL	NPC-2633	8	19-2	1811	
160664-66220	SPRING, RETURN	NPC-2633	8	24	1811	160690-66143	BASE, CONTROL	NPC-2633	8	19-3	1811	
160667-56750	SCREW, ADJUSTING	NPC-2633	7	27	1809	160690-66180	LEVER ASSY, GOVERNOR	NPC-2633	8	28	1811	
160670-66350	COLLAR	NPC-2633	8	25	1811	160690-66200	LINK, THROTTLE	NPC-2633	8	31	1811	
160690-01330	GASKET, CYL. HEAD	NPC-2633	1	9	1803	160690-66210	SPRING, TENSION	NPC-2633	8	32	1811	
160690-02220	OIL SEAL TC25416	NPC-2633	1	5	1803	160690-76510	CASE, STARTER	NPC-2633	9	3	1812	
				15	1803	160690-76520	REEL	NPC-2633	9	4	1812	
160690-03050	BREATHER	NPC-2633	2	20	1804	160690-76530	GUIDE, RATCHET	NPC-2633	9	8	1812	
160690-11010	HEAD ASSY, CYLINDER	NPC-2633	2	2	1804	160690-76540	SPRING, SPIRAL	NPC-2633	9	9	1812	
160690-11100	VALVE, INTAKE	NPC-2633	2	6	1804	160690-76550	WASHER, THRUST	NPC-2633	9	11	1812	
160690-11110	VALVE, EXHAUST	NPC-2633	2	7	1804	160690-76560	SPRING, FRICTION	NPC-2633	9	10	1812	
160690-11120	SPRING, VALVE	NPC-2633	2	8	1804	160690-76580	PLATE, FRICTION	NPC-2633	9	7	1812	
160690-11180	RETAINER, SPRING	NPC-2633	2	9	1804	160690-76590	PULLEY, STARTER	NPC-2633	9	20	1812	
160690-11200	ARM, ROCKER	NPC-2633	2	10	1804	160690-76620	KNOB, STARTER	NPC-2633	9	16	1812	
160690-11220	PIVOT, ROCKER ARM	NPC-2633	2	11	1804	160690-76800	RATCHET	NPC-2633	9	5	1812	
160690-11270	BOLT	NPC-2633	2	12	1804	160690-76810	PIN, RATCHET	NPC-2633	9	6	1812	
160690-11271	BOLT	NPC-2633	2	12-1	1804	160690-76820	SHAFT	NPC-2633	9	12	1812	
160690-11280	NUT M6X 0.5	NPC-2633	2	13	1804	160690-76830	CAP, KNOB	NPC-2633	9	17	1812	
160690-11290	PLATE, GUIDE	NPC-2633	2	14	1804	160690-76840	PLATE, SLIDE	NPC-2633	9	19	1812	
160690-11300	BONNET	NPC-2633	2	16	1804	160690-78010	PLUG, SPARK	NPC-2633	9	22	1812	
160690-11310	GASKET, BONNET	NPC-2633	2	17	1804	160690-78020	PLUG, SPARK	NPC-2633	9	22-1	1812	
160690-12510	CAP, AIR CLEANER	NPC-2633	4	2	1806	160690-78081	MAGNET ASSY, FLYWHEEL	NPC-2633	9	25	1812	

PART NO.	DESCRIPTION	CATALOG NO.	GRP. NO.	REF. NO.	LOC NO.	PART NO.	DESCRIPTION	CATALOG NO.	GRP. NO.	REF. NO.	LOC NO.
160690-78082	MAGNET ASSY, FLYWHEEL	NPC-2633	9	25-	1 1B12	160820-59390	PIPE, FUEL	NPC-2633	6	26-	1 1B08
160690-78230	CORD, STOP	NPC-2633	9	26A	1B12	160903-56670	SCREW	NPC-2633	7	4	1B09
160690-78532	IGNITER	NPC-2633	9	26	1B12	181230-56380	SPRING	NPC-2633	7	8	1B09
160690-78540	ROTOR	NPC-2633	9	27	1B12					26	1B09
160690-78541	ROTOR	NPC-2633	9	27-	1 1B12	22137-060000	WASHER 6, POLISHED	NPC-2662	1	27	1E03
160691-56010	CARBURETOR ASSY	NPC-2633	7	1	1B09			NPC-2680	8	19	1C14
160691-56040	CARBURETOR	NPC-2633	7	1-	1 1B09				20	21	1D04
160691-56750	LEVER, CHOKE	NPC-2633	7	14	1B09	22137-080000	WASHER 8, POLISHED	NPC-2662	1	12	1E03
160691-56760	SPRING	NPC-2633	7	30	1B09			NPC-2680	2	26	1C04
160691-76050	STARTER ASSY, RECOIL	NPC-2633	9	1	1B12					26-	1 1C04
160691-76250	RECOIL ASSY	NPC-2633	9	2	1B12					37	1C04
160691-76630	ROPE, STARTER	NPC-2633	9	15	1B12				7	8	1C13
160692-45110-2	CASE, FAN (WHITE:14)	NPC-2633	9	33-	1 1B12				8	2	1C14
160692-55300	COCK ASSY, FUEL	NPC-2633	6	14-	1 1B08				9	9	1C15
160692-55421	PLATE	NPC-2633	6	19F	1B08				10	7	1C16
160692-56560	VALVE, NEEDLE (RUBBER	NPC-2633	7	33	1B09				14	4	1D01
160692-56620	O-RING	NPC-2633	7	30C	1B09				19	8	1D03
160692-56640	SHAFT, THROTTLE	NPC-2633	7	13	1B09				20	2	1D04
160692-56710	SCREW	NPC-2633	7	7	1B09				21	4	1D05
160692-56730	BOLT	NPC-2633	7	20-	1 1B09					16	1D05
160692-56800	SEAL, RUBBER	NPC-2633	7	30A	1B09	22137-100000	WASHER 10, POLISHED	NPC-2662	1	17	1E03
160692-66051	LEVER ASSY, CONTROL	NPC-2633	8	13	1B11				3	6	1E05
160692-66101	CONTROL ASSY	NPC-2633	8	12	1B11				9	9	1E11
160693-13510	MUFFLER	NPC-2633	4	11	1B06			NPC-2680	2	5	1C04
160693-13540	COVER, MUFFLER	NPC-2633	4	12	1B06				3	17	1C06
160693-13600	MUFFLER W/COVER	NPC-2633	4	10	1B06				5	19	1C10
160693-45110	CASE, FAN (WHITE) (14)	NPC-2633	9	33	1B12				9	5	1C15
160700-78040	CAP, PLUG	NPC-2633	9	23	1B12				17	17	1C07
160700-78050	TERMINAL, PLUG	NPC-2633	9	24	1B12	22137-120000	WASHER 12, POLISHED	NPC-2680	1	12	1C03
160700-78720	GROMMET	NPC-2633	9	28	1B12				7	4	1C13
160702-56720	RING	NPC-2633	7	28	1B09				17	23	1C07
160708-07260	MARK, CAUTION	NPC-2633	3	4	1B05				19	4	1D03
160710-01760	CAP, W/LUB.OIL GAUGE	NPC-2633	1	18	1B03	22137-160000	WASHER 16, POLISHED	NPC-2680	4	9	1C09
160710-23201	BOLT, ROD	NPC-2633	5	33	1B07				5	9	1C10
160710-55061	CAP ASSY, FUEL TANK	NPC-2633	6	4	1B08	22217-060000	SPRING WASHER 6	NPC-2662	1	26	1E03
160710-55360	RING	NPC-2633	6	19B	1B08				7	3	1E09
160710-55370	GASKET	NPC-2633	6	19C	1B08	22217-080000	SPRING WASHER 8	NPC-2662	1	13	1E03
160710-55381	STRAINER, FUEL	NPC-2633	6	19D	1B08	22217-100000	SPRING WASHER 10	NPC-2662	1	18	1E03
160710-55390	BOWL, STRAINER	NPC-2633	6	19E	1B08			NPC-2680	2	19	1C04
160710-76640	DAMPER	NPC-2633	9	18	1B12	22217-120000	WASHER 12, SPRING	NPC-2662	1	23	1E03
160710-78710	CLAMP, CORD	NPC-2633	6	28	1B08			NPC-2680	1	13	1C03
160760-12530	ELEMENT	NPC-2633	4	3	1B06	22217-160000	SPRING WASHER 16	NPC-2680	4	10	1C09
160762-55150	GAUGE, FUEL	NPC-2633	6	13	1B08					17	1C09
160769-56620	FLOAT ASSY	NPC-2633	7	11	1B09				5	10	1C10
160769-56640	BODY, FLOAT CHAMBER	NPC-2633	7	18	1B09	22242-000100	CIRCLIP 10	NPC-2680	11	29	1D07
160769-56660	BOLT	NPC-2633	7	20	1B09	22242-000140	CIRCLIP 14	NPC-2662	7	6	1E09
160792-56591	BODY A, COCK	NPC-2633	7	30D	1B09	22242-000150	CIRCLIP 15	NPC-2680	1	4	1C03
160798-07100	LABEL, FINGER START	NPC-2633	3	1	1B05	22242-000160	CIRCLIP 16	NPC-2680	1	9	1C03
160802-56480	GASKET	NPC-2633	7	21-	1 1B09	22242-000200	CIRCLIP 20	NPC-2680	1	7	1C03
				21-	2 1B09				5	6	1C10
160802-59370	PIPE, FUEL	NPC-2633	6	30	1B08	22242-000220	CIRCLIP 22	NPC-2662	5	7	1E07
160810-03180	PIPE, BREATHER	NPC-2633	2	21	1B04	22242-000300	CIRCLIP 30	NPC-2662	6	9	1E08
160810-56580	RING, CHOKE SHAFT	NPC-2633	7	15	1B09			NPC-2680	11	24	1D07
160810-56670	SCREW	NPC-2633	7	3	1B09	22252-000160	CIRCLIP 16	NPC-2633	5	30	1B07

PART NO.	DESCRIPTION	CATALOG NO.	GRP. NO.	REF. NO.	LOC NO.	PART NO.	DESCRIPTION	CATALOG NO.	GRP. NO.	REF. NO.	LOC NO.
22252-000350	CIRCLIP 35	NPC-2680	1	6	1C03	25123-008401	V-BELT SP.884H	NPC-2680	2	23	1C04
22252-000420	CIRCLIP 42	NPC-2680	4	6	1C09	26014-060259	BOLT 6X25 W/PL.&SP.W	NPC-2680	6	14	1C12
22252-000520	CIRCLIP 52	NPC-2680	2	14	1C04				18	14	1D02
22252-000550	CIRCLIP 55	NPC-2662	6	8	1E08	26016-060124	BOLT 6X12 W/L.W.	NPC-2662	7	10	1E09
22312-080120	PARALLEL PIN 8X12	NPC-2633	1	4	1B03	26016-080204	BOLT M 8X 20	NPC-2680	2	11	1C04
22351-050025	SPRING PIN 5X25	NPC-2662	8	4	1E10	26018-080164	BOLT M 8X 16	NPC-2680	2	3	1C04
		NPC-2680	9	16	1C15					33	1C04
			21	13	1D05					35	1C04
22360-080000	SNAP PIN 8	NPC-2680	7	9	1C13	26018-080204	BOLT M 8X 20	NPC-2680	14	7	1D01
			8	3	1C14	26018-080254	BOLT M 8X 25	NPC-2680	2	21	1C04
			9	10	1C15				3	7	1C06
			10	8	1C16				8	14	1C14
			14	10	1D01				11	19	1D07
			19	9	1D03					20	1D07
			20	3	1D04				17	7	1C07
			21	5	1D05				20	15	1D04
22372-080000	SNAP PIN (JASO 8)	NPC-2633	8	10	1B11	26018-100254	BOLT M10X 25	NPC-2680	2	17	1C04
22417-200160	COTTER PIN 2.0X16	NPC-2680	8	20	1C14				3	5	1C06
			20	22	1D04				6	2	1C12
22417-200200	COTTER PIN 2.0X20	NPC-2633	6	18	1B08				8	10	1C14
22417-250200	COTTER PIN 2.5X20	NPC-2680	7	14	1C13				17	5	1C07
			8	7	1C14				18	2	1D02
			9	13	1C15				20	10	1D04
			19	14	1D03	26051-080002	NUT M 8	NPC-2680	1	17	1C03
			20	7	1D04				2	31	1C04
			21	8	1D05				6	8	1C12
22417-250250	COTTER PIN 2.5X25	NPC-2680	5	20	1C10				8	17	1C14
22417-400300	COTTER PIN 4.0X30	NPC-2680	11	22	1D07				18	8	1D02
22512-040120	KEY 4X 12	NPC-2633	5	10	1B07				20	19	1D04
				21	1B07	26051-100002	NUT M10	NPC-2680	2	6	1C04
22512-040160	KEY 4X 16	NPC-2633	5	22	1B07				3	18	1C06
22512-050300	KEY 5X 30	NPC-2633	5	14	1B07				11	8	1D07
22550-050250	KEY 5X25	NPC-2680	2	25	1C04				17	18	1C07
22550-070400	KEY 7X40	NPC-2680	2	12	1C04	26051-120002	NUT M12	NPC-2680	7	5	1C13
24101-060034	BALL BEARING	NPC-2662	2	4	1E04				19	5	1D03
			4	6	1E06	26052-100002	NUT M10 W/SPRING	NPC-2680	5	14	1C10
24101-060044	BALL BEARING 6004	NPC-2662	5	8	1E07	26106-060082	BOLT M 6X 8 PLATED	NPC-2633	4	13	1B06
		NPC-2680	5	5	1C10				9	21	1B12
24101-060064	BALL BEARING	NPC-2662	6	5	1E08	26106-060102	BOLT M 6X 10 PLATED	NPC-2633	6	22	1B08
24101-062050	BALL BEARING	NPC-2633	1	6	1B03	26106-060142	BOLT M 6X 14 PLATED	NPC-2633	6	22	1B08
				14	1B03	26106-060202	BOLT M 6X 20 PLATED	NPC-2633	2	18	1B04
				16	1B03	26106-060352	BOLT M 6X 35 PLATED	NPC-2633	2	19	1B04
24102-060044	BALL BEARING	NPC-2680	4	5	1C09	26106-080142	BOLT M 8X 14 PLATED	NPC-2633	4	17	1B06
24104-062024	BALL BEARING	NPC-2680	1	5	1C03	26106-080202	BOLT M 8X 20 PLATED	NPC-2633	5	15	1B07
24104-062054	BALL BEARING	NPC-2680	2	15	1C04	26116-080552	BOLT M 8X 55 PLATED	NPC-2680	14	3	1D01
24311-000143	O-RING 1A P 14.0	NPC-2662	9	6	1E11	26117-040088	BOLT M 4X 8 PLATED	NPC-2633	7	23	1B09
24311-000180	O-RING 1A P-18.0	NPC-2633	1	20	1B03				8	17	1B11
		NPC-2662	1	8	1E03	26117-040257	BOLT M 4X 25	NPC-2633	8	23	1B11
24421-204208	SEAL TC20 42 08, OIL	NPC-2680	5	7	1C10	26117-060084	BOLT M6X 8	NPC-2680	4	12	1C09
24421-305512	SEAL TC30 55 12, OIL	NPC-2662	6	6	1E08				5	12	1C10
24761-010000	NIPPLE M6F, GREASE	NPC-2680	10	12	1C16	26117-080352	BOLT M 8X 35 PLATED	NPC-2662	1	15	1E03
			20	18	1D04	26117-080602	BOLT M 8X 60 PLATED	NPC-2662	1	11	1E03
24761-060000	NIPPLE MT6X1, GREASE	NPC-2680	13	4	1D10	26117-081102	BOLT M 8X110 PLATED	NPC-2662	1	20	1E03
25123-002801	V-BELT	NPC-2680	2	7	1C04	26117-100254	BOLT M10X25 PLATED	NPC-2662	1	21	1E03

PART NO.	DESCRIPTION	CATALOG NO.	GRP. NO.	REF. NO.	LOC. NO.	PART NO.	DESCRIPTION	CATALOG NO.	GRP. NO.	REF. NO.	LOC. NO.
26117-100254	BOLT M10X25 PLATED	NPC-2680	2	4	1C04	26717-160002	NUT M16	NPC-2680	5	11	1C10
			11	12	1D07	26757-060002	NUT M 6	NPC-2633	8	27	1B11
26117-100504	BOLT M10X 50 PLATED	NPC-2680	9	4	1C15	26757-080002	LOCK NUT M 8 PLATED	NPC-2680	1	16	1C03
26117-100554	BOLT M10X 55 PLATED	NPC-2680	2	18	1C04				7	12	1C13
26117-100804	BOLT 10X80	NPC-2680	3	16	1C06				8	5	1C14
			17	16	1C07				9	11	1C15
26117-101202	BOLT M10X120 PLATED	NPC-2662	1	16	1E03				14	6	1D01
26117-161204	BOLT M16X120 PLATED	NPC-2680	4	15	1C09				19	12	1D03
26216-080182	STUD M 8X 18 PLATED	NPC-2633	2	15	1B04				20	5	1D04
26347-060002	U-NUT M 6	NPC-2633	8	26	1B11				21	6	1D05
26347-080002	U-NUT M 8	NPC-2680	14	5	1D01					15	1D05
26347-100002	U-NUT M10	NPC-2680	9	6	1C15	26757-100002	LOCK NUT M10	NPC-2680	5	15	1C10
26347-120002	U-NUT M12	NPC-2680	17	24	1C07				11	9	1D07
26366-060002	NUT M 6	NPC-2633	4	7	1B06	26757-120002	LOCK NUT M12 PLATED	NPC-2680	1	11	1C03
			8	30	1B11				7	6	1C13
26366-080002	NUT M 8	NPC-2633	4	18	1B06				19	6	1D03
26367-060002	NUT M 6	NPC-2633	9	13	1B12	28110-100120	WRENCH 10X12	NPC-2633	3	12	1B05
		NPC-2680	3	10	1C06	29610-000650	CLAMP, SPEED 065	NPC-2633	9	30	1B12
			6	7	1C12	29610-000950	CLAMP, SPEED 095	NPC-2633	9	31	1B12
			17	10	1C07	43400-500400	SEAL WASHER 6	NPC-2633	6	24	1B08
			18	7	1D02	7N1296-35000	SPROCKET PIN SET	NPC-2680	5	17	1C10
26367-080002	U-NUT M 8	NPC-2680	2	22	1C04	7N1361-36001	LWR.TRANK ROLLER ASY	NPC-2680	5	2	1C10
			3	8	1C06	7N1361-36011	LWR.TRANK ROLLER SET	NPC-2680	5	1	1C10
			8	15	1C14	7N1367-58000	COVER PL ASSY PULLEY	NPC-2680	17	11	1C07
			11	17	1D07				18	5	1D02
			14	8	1D01	7N1367-66000	PANEL PL ASSY.,FRONT	NPC-2680	11	4	1D07
			17	8	1C07	7N1367-66010	PANEL PL ASSY.,REAR	NPC-2680	11	18	1D07
			20	16	1D04	7N1540-35051	IDLE WHEEL SET	NPC-2680	4	1	1C09
26367-100002	U-NUT M10	NPC-2680	2	30	1C04	7N1540-35060	IDLE WHEEL ASSY.	NPC-2680	4	2	1C09
			3	6	1C06	760690-01500	COVER ASSY, SIDE	NPC-2633	1	10	1B03
			6	3	1C12	760690-01560	BLOCK ASSY, CYLINDER	NPC-2633	1	1	1B03
			17	6	1C07	760690-01561	BLOCK ASSY, CYLINDER	NPC-2633	1	1	1B03
			18	3	1D02	760690-21701	CRANKSHAFT ASSY	NPC-2633	5	17	1B07
26476-060142	BOLT M 6X 14,TAPPING	NPC-2633	6	29	1B08	760690-22501	RING SET (T.R.=1.5)	NPC-2633	5	25	1B07
			8	33	1B11	760690-23700	ROD ASSY, CONNECTING	NPC-2633	5	31	1B07
			9	36	1B12	760690-55700	TANK, FUEL (RED)(50)	NPC-2633	6	2	1B08
				37	1B12	760690-55710	TANK ASSY, FUEL	NPC-2633	6	2	1B08
				38	1B12						
26476-060252	BOLT M 6X 25,TAPPING	NPC-2633	1	22	1B03						
			6	23	1B08						
26476-060302	BOLT M 6X 30,TAPPING	NPC-2633	9	29	1B12						
26557-040102	SCREW M 4X 10	NPC-2633	6	19	1B08						
26557-060162	SCREW M 6X 16	NPC-2662	1	25	1E03						
26557-060402	SCREW M 6X 40	NPC-2662	7	2	1E09						
26647-100302	BOLT 10X30,WING	NPC-2680	11	5	1D07						
26717-080002	NUT 8	NPC-2662	1	14	1E03						
26717-100002	NUT M10	NPC-2662	1	19	1E03						
			3	7	1E05						
			9	10	1E11						
		NPC-2680	6	11	1C12						
			18	11	1D02						
26717-120002	NUT M12	NPC-2662	1	24	1E03						
26717-160002	NUT M16	NPC-2680	4	11	1C09						
				16	1C09						

TOTAL (ITEM= 550) (REF.= 739)



**YANMAR AGRICULTURAL EQUIPMENT CO.,LTD.**

1-32, Chayamachi, Kita-ku, OSAKA 530-8321, JAPAN

Tel:06-376-6348 Cable:YANMAR OSAKA Telex:5233623